



Proposal for Graduate Student Discussions on CCS Topics in CSLF PuMP

John Bradshaw¹ &
Aleks Kalinowski¹

¹Geoscience Australia



Australian Government
Geoscience Australia

Background



- Establishment of CSLF Public Meeting Place (PuMP)
- Motivation for student body (Anthony Credoz – France)
- Paper distributed for comment

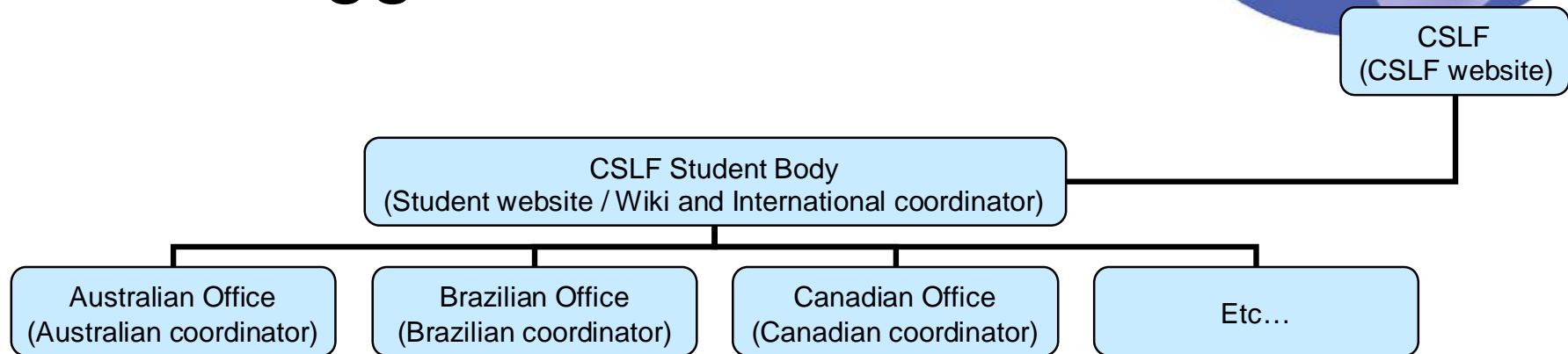
A screenshot of the CSLF Public Meeting Place (PuMP) forum interface. The page has a blue and green header with the CSLF logo and the text "CSLF PuMP". Below the header, there is a navigation bar with links for "Back to CSLF home", "Register", and "Login". A message states: "New users must register before they can create or respond to messages. Registered users must login before they can create or respond to messages. You do not have to be registered to read messages." There are also links for "Recent Topics", "Search", and "Member Listing". The main content area shows a "Forum Index" table with columns for "Forums", "Topics", "Messages", and "Last Message". The table lists two forum categories: "Technical Corner" and "General". Under "Technical Corner", there are two sub-forums: "Discussion" (5 topics, 27 messages, last message 12/20/2007 18:06:37 by Anonymous) and "Analysis of CCS Technology Gaps - A Forum for Advanced Degree University Students" (0 topics, no messages). Under "General", there is one sub-forum: "Discussion" (0 topics, no messages). Below the forum index, there is a "Who is online" section with statistics: "Our users have posted a total of 47 messages. We have 61 registered users. The newest registered user is SEQops. There are 1 online users: 0 registered, 1 guest(s) [Administrator] [Moderator]. Most users ever online was 22 on 11/02/2007 09:41:48. Connected users: Anonymous." At the bottom, there is a "Login" form with fields for "Username:" and "Password:", a checkbox for "Log me on automatically each visit", and a "Login" button. There are also status indicators for "New Messages", "No new messages", and "Blocked Forum".

Purpose of student body



- Encourage national and international interaction and networking between students, professionals on CSLF topics of interest
- Create directory of international CCS research activities
 - Additional to CSLF recognised projects
 - Complimentary to IEA GHG listings
 - At student project level
- Maximise dissemination and uptake of CSLF outputs and outcomes

Suggested Structure



- Loosely organised and largely self-managing:
 - i.e. CSLF support it not run it
- International CSLF contact point / coordinator
 - Australia (Geoscience Australia) willing to assist in establishment
- National coordinator in each participating country (based at appropriate research institution) – need to clearly define role (conduit)
 - Aust coordinator already in place

Initial Requirements



- Require establishing a student website / interactive forum (e.g. as part of existing PuMP)
 - CSLF secretariat (with Australian overview - plus any others willing to assist)
- Timeframe - can be implemented quickly – mid 2008 (post South Africa meeting)

Suggested initial activities



- Building of contact list (coordinator) each country
- Coordinators to disseminate information about CSLF Student Body nationally to local research institutes
- Encourage Research groups/individuals to visit web site and contribute

Initial outcomes



- Compilation of directory of international CCS research activities
- Thematic student discussion groups
- Exhibition and discussion of student research through student profile, links, research materials.
- Use of PIRT Technology Gaps Analysis & CSLF Road Map in guiding Student Research projects
 - Feedback for their updating
- More focussed research activities

Potential future activities



- Career and study centre
- International exchanges, visits, internships
- Scholarships, prizes, awards, grants
- Student newsletter
- Meetings, workshops, conferences, courses, field trips
- National or international student taskforces
- Mentor program
- Sub-branches (state / region, city, or university) with enough demand

Benefits to CSLF



- Database / directory of CCS related research activities and contacts
- Capacity building, increasing visibility and influence
- Public Outreach to younger generation of researchers
- Help motivate potential resource pool of CCS trained people
- Linkage with IEA GHG and other organisations, CCS summer school, and so on

Comments



- Welcome thoughts and any volunteers to help initiate this program (if approved).