



EUROPEAN
COMMISSION

Community Research

CO₂ GeoNet

European Network of Excellence Geological Storage of CO₂

Co-ordinator Dr. Nick Riley, BGS UK

Chairman N.P. Christensen, GEUS Denmark





EUROPEAN
COMMISSION

Community Research

CO₂GeoNet is a “Network of Excellence” 13 Research Partners

Denmark

Geological Survey of Denmark and Greenland – GEUS

France

Bureau de Recherches Geologiques et Minieres- BRGM
Institute Francais du Petrole – IFP

Germany

Federal Institute for Geosciences and Natural Resources – BGR

Italy

Istituto Nazionale di Oceanografia e di Geofisica Sperimentale- OGS
Università di Roma “La Sapienza” - URS

Netherlands

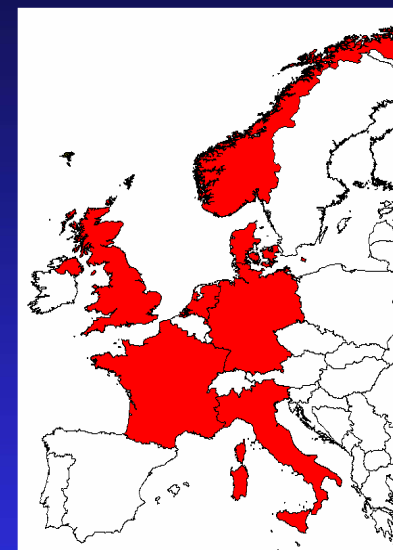
Netherlands Organisation for Applied Scientific Research – TNO

Norway

Norwegian Institute for Water Research – NIVA
Stiftelsen Rogalandsforskning- RF
SINTEF Petroleumsforskning AS – SPR

UK

Natural Environment Research Council- British Geological Survey- BGS)
Heriot-Watt University – HWU
Imperial College of Science, Technology and Medicine- IMPERIAL





EUROPEAN
COMMISSION

Community Research

Why a Network of Excellence?

Need to strengthen European Research Area (ERA):

- Jointly develop / share knowledge & research infrastructure
- Durable integration resulting in co-dependence & standardisation
- Grow the Network
- Pave the way for the next generation of researchers
- Align & harness national research programmes
- Provide authoritative scientific advice for Europe on CO₂ storage R&D
- Engage & collaborate with major non-EU R&D programmes & research centres





EUROPEAN
COMMISSION

Community Research

Why CO₂ storage ?

- Storage is the critical path to CO₂ capture and storage (CCS)
- without storage capture is useless
(capture is already possible – cost reduction & widespread commercial application are the most prominent issues)
- In the CCS chain: storage is of most concern to policymakers, regulators and the public
- Europe has been in the forefront of CO₂ storage R&D since 1991 (Joule 2)
(the core group of research partners forms a critical mass of established joint research activity upon which the existing and newer R&D entrants can develop)
- Open public-domain dissemination of R&D on storage is more likely to be achieved earlier than capture; as it is commercially less sensitive than developing capture technologies





EUROPEAN
COMMISSION

Community Research

Resourcing

Launched April 2004

Budget over 5 years

EC Contribution: €6 million

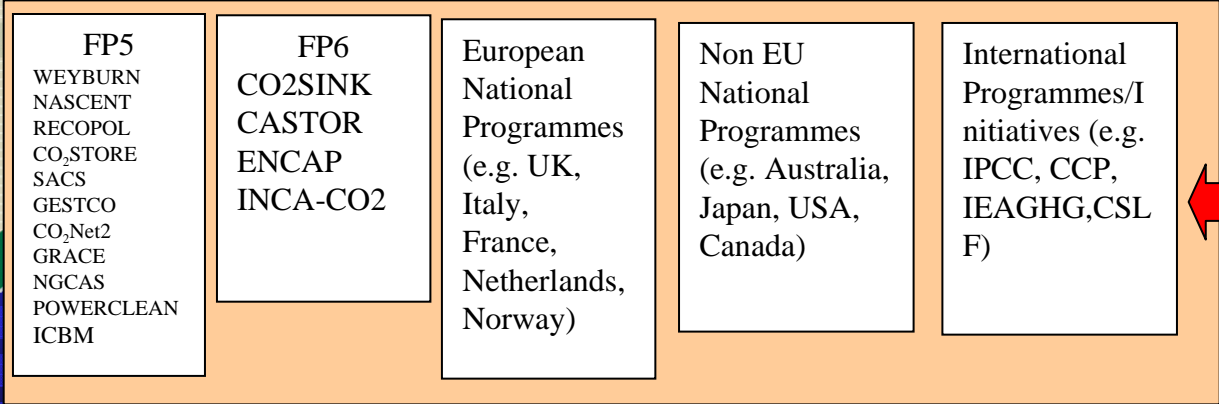
Network Partners and external funding: €3 million

Beyond 2009 the Network has to be funded independently of the EC

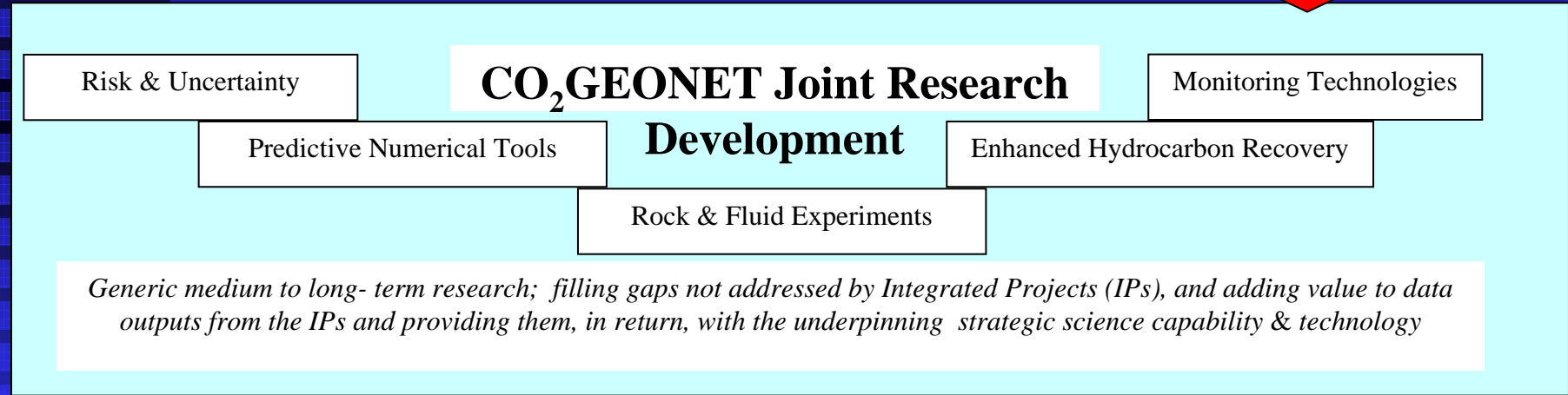




EUROPEAN COMMISSION



STRENGTHEN EUROPEAN RESEARCH AREA (ERA) THROUGH INTEGRATION, REDUCING OVERLAP & FRAGMENTATION. SUSTAIN THE ERA THROUGH TRAINING, ALIGNING & DEVELOPING RESEARCH PROGRAMMES



DISSEMINATION TO POLICYMAKERS-REGULATORS- COMMERCE- PUBLIC
 FEEDBACK FROM THESE STAKEHOLDERS INTO NoE STRATEGIC RESEARCH PRIORITIES

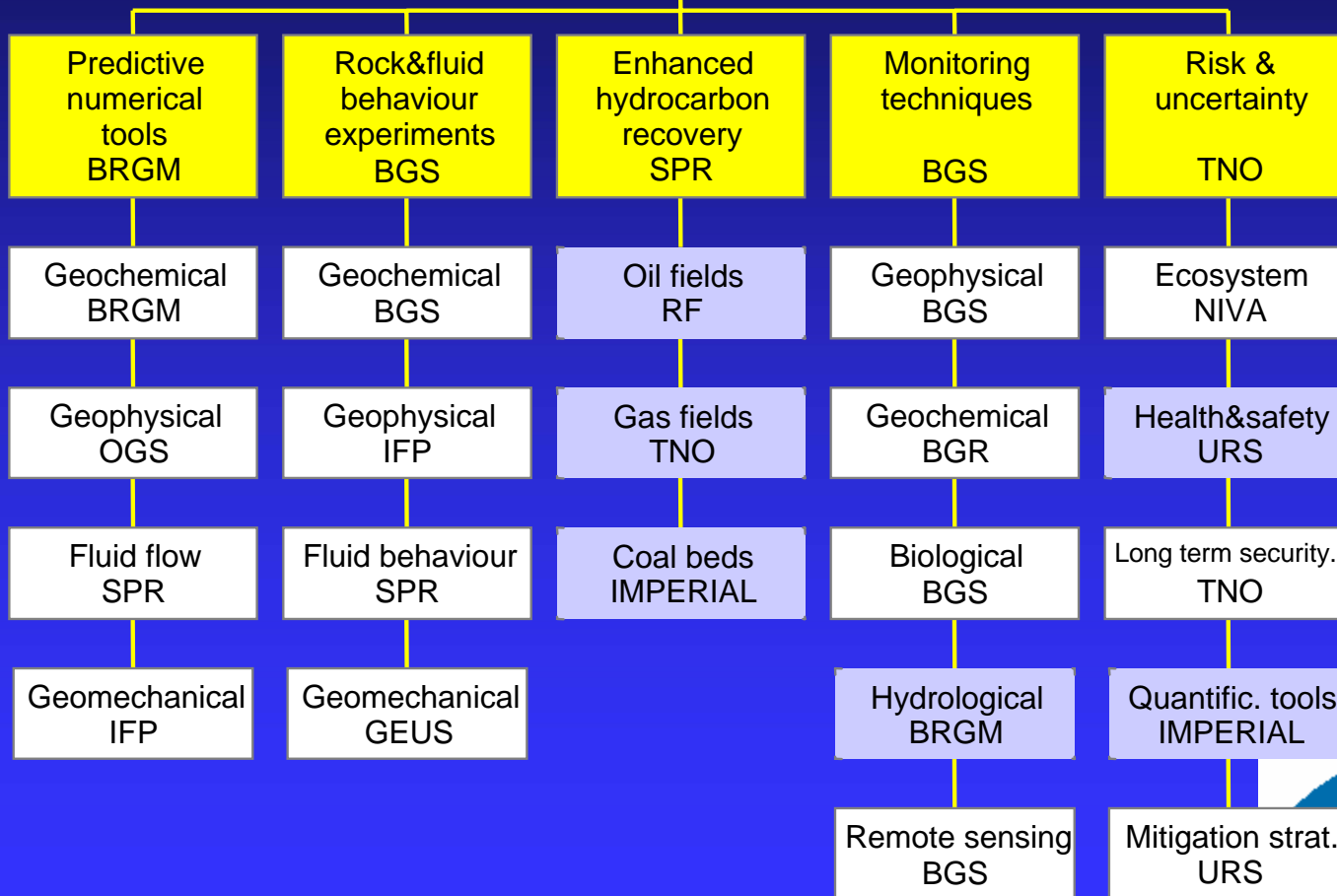




EUROPEAN
COMMISSION

Community Research

Joint Research Activities



See slide 2 for abbreviations





EUROPEAN
COMMISSION

Community Research

Management structure

