



EUROPEAN  
COMMISSION

Community Research

# **“CO<sub>2</sub> GeoNet”**

## **European Network of Excellence**

### **Geological Storage of CO<sub>2</sub>**

*Prepared by*

*Dr. Nick Riley MBE, FGS, C.Geol*

*Co-ordinator*

*BGS Keyworth, Notts, UK*

*njr@bgs.ac.uk*

**Presented by Dr. Pierre Le Thiez, IFP**

**Pierre.LE-THIEZ@ifp.fr**

CSLF Melbourne Sept 04





EUROPEAN  
COMMISSION

Community Research

## 13 Partners

### Denmark

Geological Survey of Denmark and Greenland –GEUS

### France

Bureau de Recherches Geologiques et Minieres- BRGM  
Institute Francais du Petrole –IFP

### Germany

Federal Institute for Geosciences and Natural Resources –BGR

### Italy

Istituto Nazionale di Oceanografia e di Geofisica Sperimentale-OGS  
Università di Roma “La Sapienza” -URS

### Netherlands

Netherlands Organisation for Applied Scientific Research –TNO

### Norway

Norwegian Institute for Water Research –NIVA  
Stiftelsen Rogalandforskning-RF  
SINTEF Petroleumsforskning AS –SPR

### UK

Natural Environment Research Council-British Geological Survey-BGS)  
Heriot-Watt University –HWU  
Imperial College of Science, Technology and Medicine-IMPERIAL





EUROPEAN  
COMMISSION

Community Research

## Why Network of Excellence?

Need to strengthen European Research Area (ERA):

- Align & harness national research programmes
- Jointly develop / share knowledge & research infrastructure
- Durable integration resulting in co-dependence & standardisation
- Grow the Network
- Pave the way for the next generation of researchers
- Provide authoritative geotechnical advice for Europe on CO<sub>2</sub> storage R&D
- Engage and collaborate with major non-EU R&D programmes & research centres





EUROPEAN  
COMMISSION

Community Research

## Why CO<sub>2</sub> storage ?

- Storage is the critical path to CCS- without storage capture is useless (capture is already possible –cost reduction & widespread commercial application are the most prominent issues)
- In the CCS chain: storage is of most concern to policymakers, regulators and the public
- Europe has led the way on CO<sub>2</sub> storage R&D since 1991 (Joule 2) (the core group of research partners forms a critical mass of established joint research activity upon which the existing and new R&D entrants can develop)
- Open public-domain dissemination of R&D on storage is more likely to be achieved earlier than capture; as it is commercially less sensitive than developing capture technologies





EUROPEAN  
COMMISSION

Community Research

## Resourcing

Launched April 2004

Budget over 5 years

EC Contribution- €6million

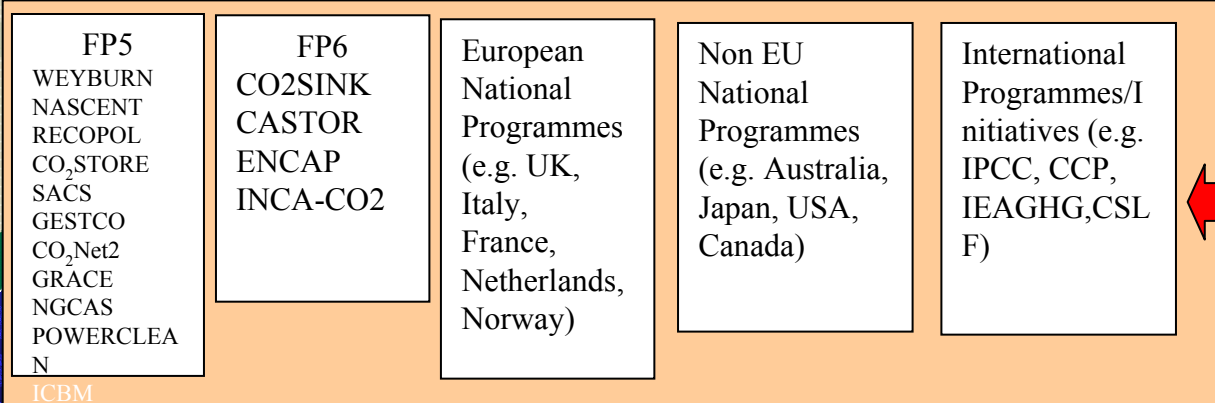
Network Partners and external funding- €3million

Beyond 2009 the Network has to be funded independently of the EC

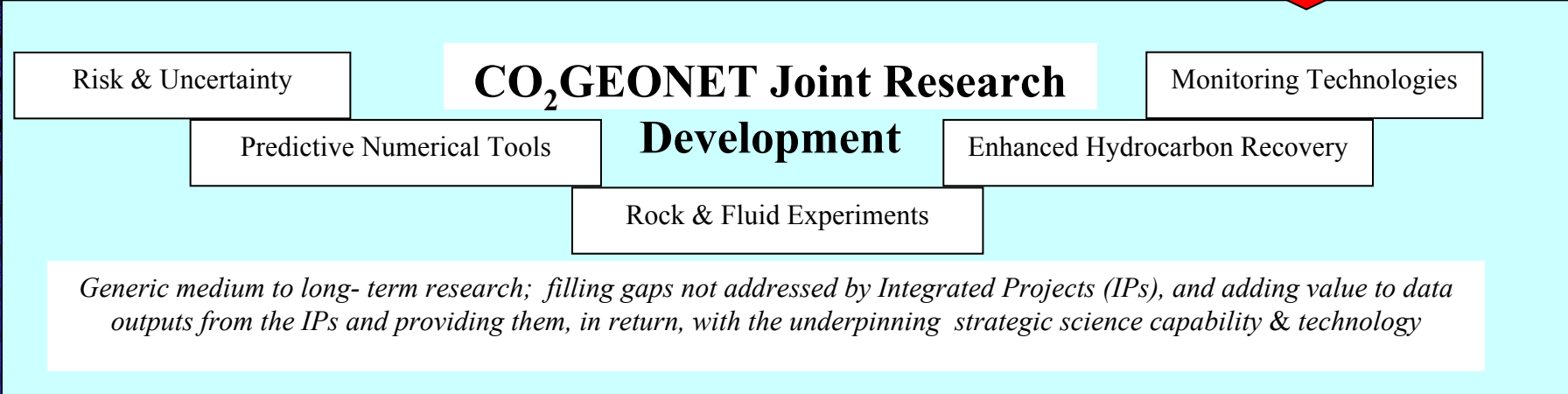




EUROPEAN COMMISSION



STRENGTHEN EUROPEAN RESEARCH AREA (ERA) THROUGH INTEGRATION, REDUCING OVERLAP & FRAGMENTATION. SUSTAIN THE ERA THROUGH TRAINING, ALIGNING & DEVELOPING RESEARCH PROGRAMMES

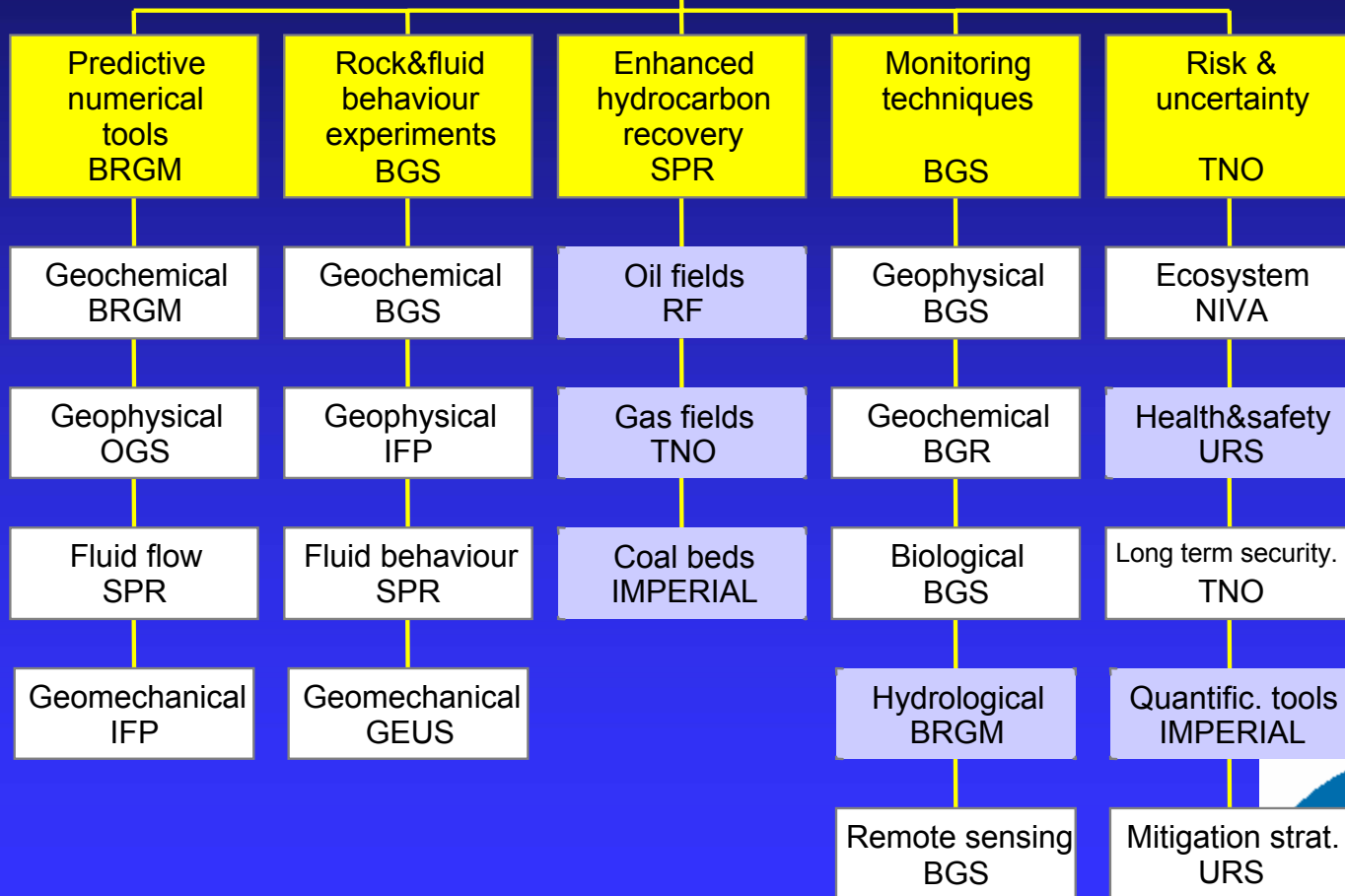


DISSEMINATION TO POLICYMAKERS-REGULATORS- COMMERCE- PUBLIC  
 FEEDBACK FROM THESE STAKEHOLDERS INTO NoE STRATEGIC RESEARCH PRIORITIES



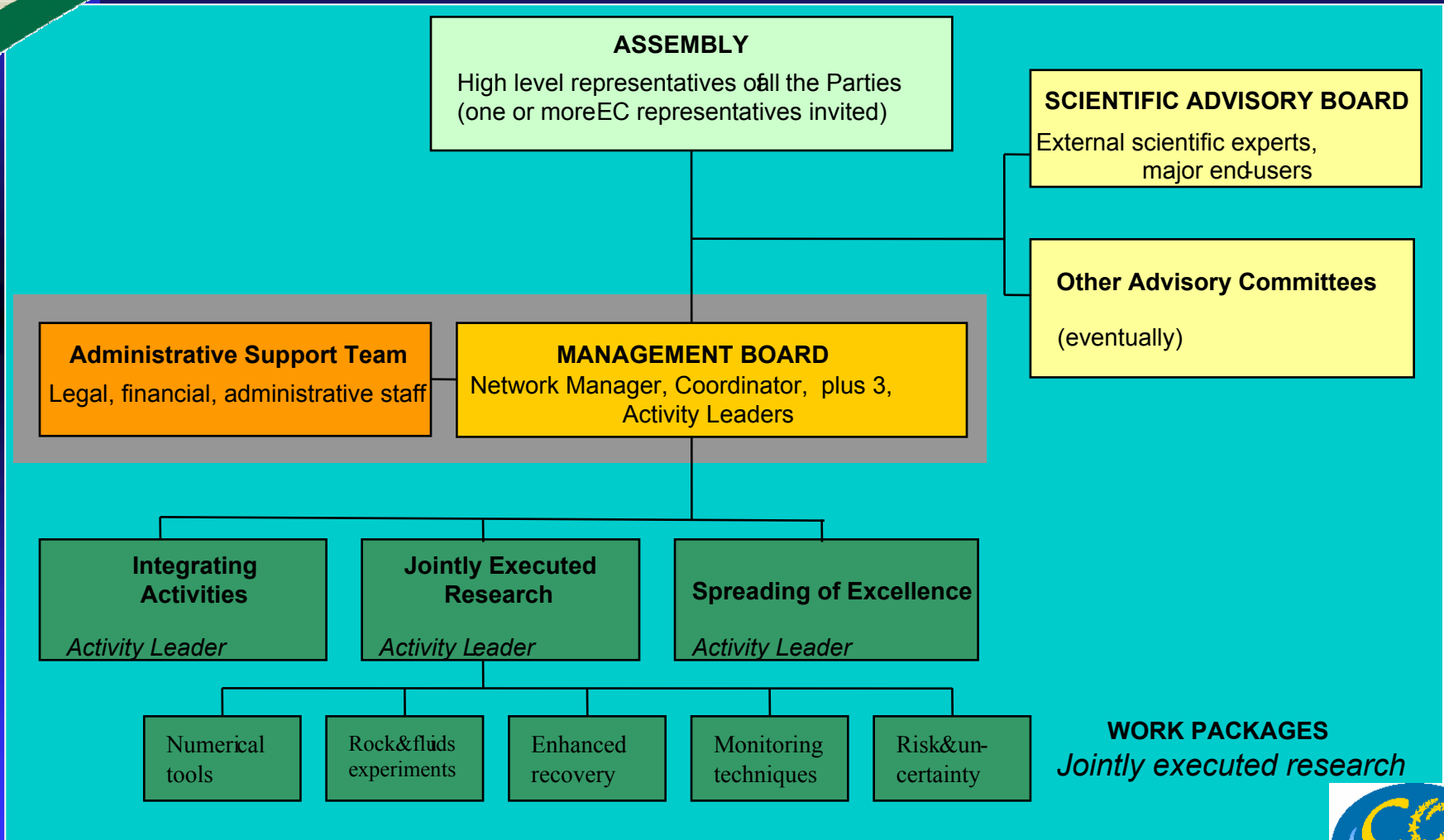


## Joint Research Activities





# Management structure







EUROPEAN  
COMMISSION

Community Research

Joint Research Activities are reviewed annually.  
The next review (Jan-March 2005) will take into particular account:

Alignment with evolving EC and national/international Initiatives

Addressing R&D where there is a market gap; or the issues are too sensitive for the commercial sector to handle

Issues where clear impartiality is required to aid public acceptance





EUROPEAN  
COMMISSION

Community Research

We recommend that CSLF member countries consider forming national/regional networks as crucial building blocks- particular for the R&D community- they are key stakeholders in CCS

CO<sub>2</sub>GeoNet would very much like to collaborate with CSLF Countries and their R&D programmes.

Thank you for your attention!

CONTACT: Dr. Nick Riley, Co-ordinator, [njr@bgs.ac.uk](mailto:njr@bgs.ac.uk)

