



# *Detailed Monthly and Annual LNG Import Statistics*

*2004 - 2011*

**U.S. Department of Energy  
Office of Fossil Energy  
Office of Oil and Natural Gas  
July 29, 2011**

# LNG Imports (Number of Cargos)

(1 of 6)

Terminal	Year	Jan	Feb	Mar	Apr	May	Jun	Jul	Aug	Sep	Oct	Nov	Dec	Annual Totals
Everett MA*	2004	6	6	5	5	6	6	5	5	5	6	6	6	67
	2005	7	5	6	5	5	5	5	5	4	6	5	5	63
	2006	6	6	6	5	6	5	5	5	4	6	5	6	65
	2007	7	5	6	7	4	5	6	6	4	5	5	6	66
	2008	7	6	6	5	4	5	5	5	5	5	5	6	64
	2009	7	6	5	5	4	4	5	5	3	5	6	6	61
	2010	6	6	5	4.6	6	6	5	5.9	5	5	5	5	64.5
	2011	6	7	5	4	3								25
Cove Point MD	2004	6	7	6	6	6	6	7	7	7	5	6	8	77
	2005	7	7	7	6	8	7	7	3	6	6	7	7	78
	2006	4	4	3	5	4	5	4	4	2	1	1	3	40
	2007	5	2	8	7	8	–	8	8	2	2	1	–	51
	2008	2	1	2	–	1	–	–	2	–	–	–	1	9
	2009	1	2	1	5	4	4	3	–	1	1	1	2	25
	2010	5	3	3	2	–	–	–	–	–	2	–	–	15
	2011	1	2	–	–	–								3

\* Cargo delivered to Everett, MA on April 4, 2010 is the remainder of the cargo that partially discharged at the Neptune DWP on March 10, 2010. Cargo delivered to Everett, MA on August 16, 2010 is a portion of the cargo which completed discharge at the Neptune DWP on August 22, 2010.

# LNG Imports (Number of Cargos)

(2 of 6)



Terminal	Year	Jan	Feb	Mar	Apr	May	Jun	Jul	Aug	Sep	Oct	Nov	Dec	Annual Totals
Elba Island GA	2004	3	3	2	3	3	4	4	4	4	4	3	4	41
	2005	3	4	3	3	3	5	5	4	6	5	5	4	50
	2006	3	3	3	5	5	5	5	6	5	4	5	6	55
	2007	4	6	5	5	6	6	7	9	6	4	4	2	64
	2008	2	2	2	5	5	5	6	6	5	5	2	4	49
	2009	3	2	3	6	7	5	6	4	5	3	3	3	50
	2010	4	3	3	3	4	3	4	3	4	2	2	2	37
	2011	2	2	3	2	2								
Lake Charles LA	2004	5	2	5	3	5	8	12	6	5	3	–	5	59
	2005	5	3	–	3	3	3	2	3	3	4	5	2	36
	2006	1	1	–	6	9	7	6	3	4	3	6	4	50
	2007	3	3	12	15	14	17	11	7	3	1	–	–	86
	2008	–	–	–	–	–	–	–	–	2	–	1	–	3
	2009	–	–	1	2	2	1	1	1	1	1	1	–	11
	2010	–	–	1	3	4	4	1	–	–	1	–	–	14
	2011	–	–	–	1	–								

# LNG Imports (Number of Cargos)

(3 of 6)

Terminal	Year	Jan	Feb	Mar	Apr	May	Jun	Jul	Aug	Sep	Oct	Nov	Dec	Annual Totals
Gulf** Gateway	2004	N/A	N/A	N/A	N/A	N/A	N/A	N/A	N/A	N/A	N/A	N/A	N/A	N/A
	2005	N/A	N/A	1	–	–	–	–	1	–	–	–	–	2
	2006	–	–	–	–	–	–	–	1	–	–	–	–	1
	2007	–	–	1	–	1	2	2	1	–	–	–	–	7
	2008	–	–	–	–	–	–	–	–	–	–	–	–	–
	2009	–	–	–	–	–	–	–	–	–	–	–	–	–
	2010	–	–	–	–	–	–	–	–	–	–	–	–	–
	2011	–	–	–	–	–	–	–	–	–	–	–	–	–
Northeast Gateway*	2004	N/A	N/A	N/A	N/A	N/A	N/A	N/A	N/A	N/A	N/A	N/A	N/A	N/A
	2005	N/A	N/A	N/A	N/A	N/A	N/A	N/A	N/A	N/A	N/A	N/A	N/A	N/A
	2006	N/A	N/A	N/A	N/A	N/A	N/A	N/A	N/A	N/A	N/A	N/A	N/A	N/A
	2007	N/A	N/A	N/A	N/A	N/A	N/A	N/A	N/A	N/A	N/A	N/A	N/A	N/A
	2008	N/A	N/A	N/A	N/A	1	–	–	–	–	–	–	–	1
	2009	0.2	–	0.0	0.7	0.1	–	–	–	–	–	0.1	1.0	2.1
	2010	2.9	2.8	0.3	–	–	–	–	–	–	–	–	–	5.9
	2011	–	–	–	–	–	–	–	–	–	–	–	–	–

\*Several of the cargos that arrived at Northeast Gateway were discharged over the course of several months.

Due to technical problems a cargo that arrived in January 2009 was discharged over the period of January through May 2009. The volume discharged in March was very small and rounded to zero in the table.

In November 2009 only a small amount was discharged, the rest of this cargo was discharged in January 2010.

\*\*Excelerate Energy has announced that it will retire the Gulf Gateway terminal in the near future.

# LNG Imports (Number of Cargos)

(4 of 6)



Terminal	Year	Jan	Feb	Mar	Apr	May	Jun	Jul	Aug	Sep	Oct	Nov	Dec	Annual Totals
Sabine Pass LA	2004	N/A	N/A	N/A	N/A	N/A	N/A	N/A	N/A	N/A	N/A	N/A	N/A	N/A
	2005	N/A	N/A	N/A	N/A	N/A	N/A	N/A	N/A	N/A	N/A	N/A	N/A	N/A
	2006	N/A	N/A	N/A	N/A	N/A	N/A	N/A	N/A	N/A	N/A	N/A	N/A	N/A
	2007	N/A	N/A	N/A	N/A	N/A	N/A	N/A	N/A	N/A	N/A	N/A	N/A	N/A
	2008	N/A	N/A	N/A	1	–	2	–	–	–	–	–	–	3
	2009	–	–	1	1	–	2	–	1	2	–	1	1	9
	2010	1	2	1	2	–	–	1	–	–	1	2	2	12
	2011	2	–	2	1	–								5
Freeport TX	2004	N/A	N/A	N/A	N/A	N/A	N/A	N/A	N/A	N/A	N/A	N/A	N/A	N/A
	2005	N/A	N/A	N/A	N/A	N/A	N/A	N/A	N/A	N/A	N/A	N/A	N/A	N/A
	2006	N/A	N/A	N/A	N/A	N/A	N/A	N/A	N/A	N/A	N/A	N/A	N/A	N/A
	2007	N/A	N/A	N/A	N/A	N/A	N/A	N/A	N/A	N/A	N/A	N/A	N/A	N/A
	2008	N/A	N/A	N/A	1	1	–	–	–	–	–	–	–	2
	2009	–	–	–	–	–	1	–	1	–	–	–	–	2
	2010	–	–	–	–	–	–	1	–	2	1	–	–	4
	2011	1	1	–	1	–								3

First cargo receipts: Sabine Pass-April 2008; Freeport-April 2008

# LNG Imports (Number of Cargos)

(5 of 6)



Terminal	Year	Jan	Feb	Mar	Apr	May	Jun	Jul	Aug	Sep	Oct	Nov	Dec	Annual Totals
Cameron LA	2004	N/A	N/A	N/A	N/A	N/A	N/A	N/A	N/A	N/A	N/A	N/A	N/A	N/A
	2005	N/A	N/A	N/A	N/A	N/A	N/A	N/A	N/A	N/A	N/A	N/A	N/A	N/A
	2006	N/A	N/A	N/A	N/A	N/A	N/A	N/A	N/A	N/A	N/A	N/A	N/A	N/A
	2007	N/A	N/A	N/A	N/A	N/A	N/A	N/A	N/A	N/A	N/A	N/A	N/A	N/A
	2008	N/A	N/A	N/A	N/A	N/A	N/A	N/A	N/A	N/A	N/A	N/A	N/A	N/A
	2009	N/A	N/A	N/A	N/A	N/A	1	1	-	-	-	1	-	3
	2010	1	-	-	-	-	-	1	-	-	-	-	-	2
	2011	1	-	1	1	-								3
Neptune DWP*	2004	N/A	N/A	N/A	N/A	N/A	N/A	N/A	N/A	N/A	N/A	N/A	N/A	N/A
	2005	N/A	N/A	N/A	N/A	N/A	N/A	N/A	N/A	N/A	N/A	N/A	N/A	N/A
	2006	N/A	N/A	N/A	N/A	N/A	N/A	N/A	N/A	N/A	N/A	N/A	N/A	N/A
	2007	N/A	N/A	N/A	N/A	N/A	N/A	N/A	N/A	N/A	N/A	N/A	N/A	N/A
	2008	N/A	N/A	N/A	N/A	N/A	N/A	N/A	N/A	N/A	N/A	N/A	N/A	N/A
	2009	N/A	N/A	N/A	N/A	N/A	N/A	N/A	N/A	N/A	N/A	N/A	N/A	N/A
	2010	N/A	N/A	0.4	-	-	-	-	0.1	-	-	-	-	0.5
	2011	-	-	-	-	-								-

\*Cargo delivered to Neptune DWP on March 10, 2010 was only partially discharged there, the remainder of the cargo was delivered to Everett, MA on April 4, 2010. Cargo delivered to Neptune DWP on August 22, 2010 was the remainder of a cargo delivered to Everett, MA on August 16, 2010.

# LNG Imports (Number of Cargos)

(6 of 6)



Terminal	Year	Jan	Feb	Mar	Apr	May	Jun	Jul	Aug	Sep	Oct	Nov	Dec	Annual Totals
Golden Pass TX	2004	N/A	N/A	N/A	N/A	N/A	N/A	N/A	N/A	N/A	N/A	N/A	N/A	N/A
	2005	N/A	N/A	N/A	N/A	N/A	N/A	N/A	N/A	N/A	N/A	N/A	N/A	N/A
	2006	N/A	N/A	N/A	N/A	N/A	N/A	N/A	N/A	N/A	N/A	N/A	N/A	N/A
	2007	N/A	N/A	N/A	N/A	N/A	N/A	N/A	N/A	N/A	N/A	N/A	N/A	N/A
	2008	N/A	N/A	N/A	N/A	N/A	N/A	N/A	N/A	N/A	N/A	N/A	N/A	N/A
	2009	N/A	N/A	N/A	N/A	N/A	N/A	N/A	N/A	N/A	N/A	N/A	N/A	N/A
	2010	N/A	N/A	N/A	N/A	N/A	N/A	N/A	N/A	N/A	N/A	2	1	3
First cargo received in November 2010	2011	1	1	1	1	4								7

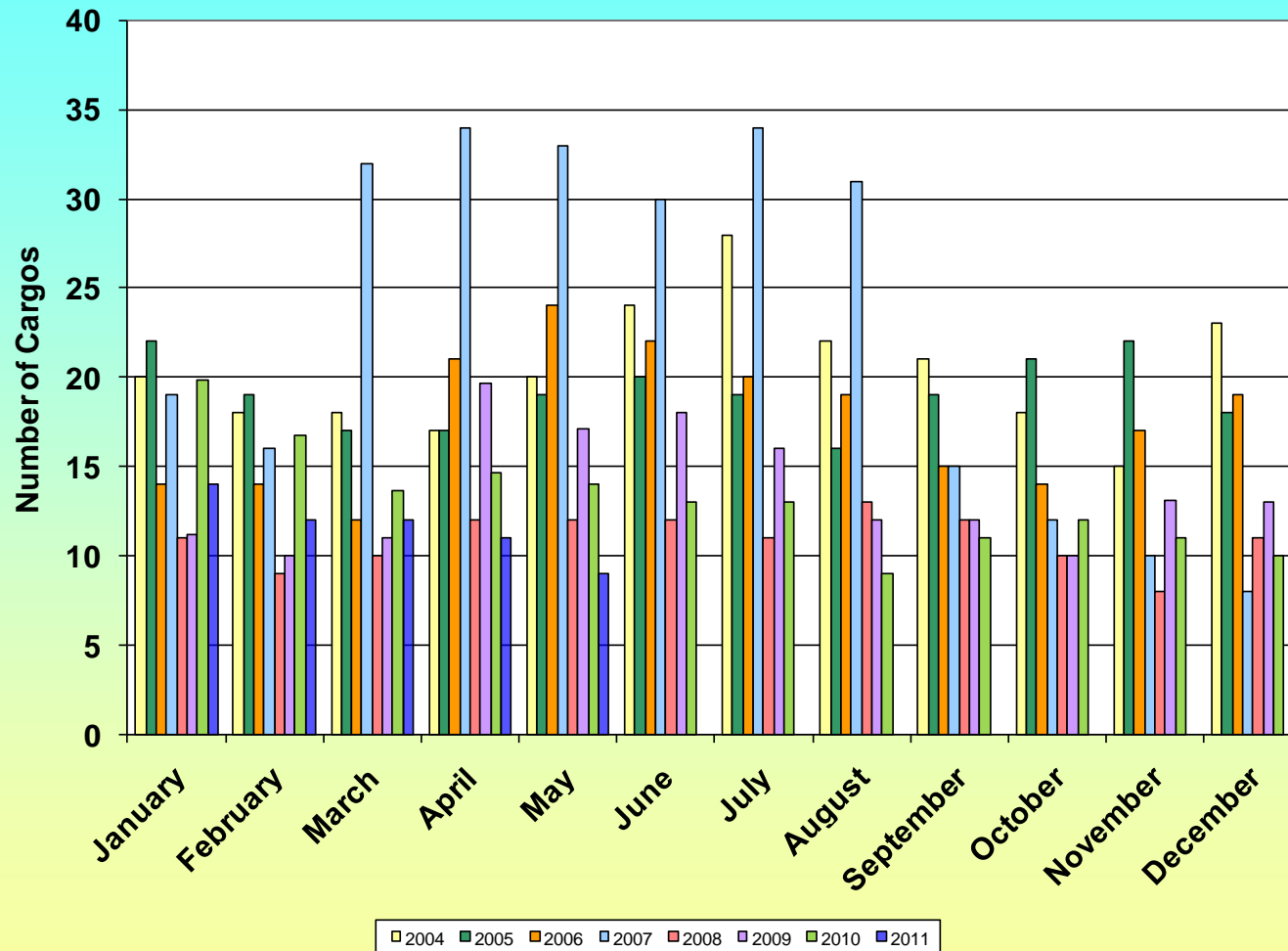
# LNG Imports (Number of Cargos) All CONUS Terminals



	Jan	Feb	Mar	Apr	May	Jun	Jul	Aug	Sep	Oct	Nov	Dec	Total
<b>2004</b>	20	18	18	17	20	24	28	22	21	18	15	23	244
<b>2005</b>	22	19	17	17	19	20	19	16	19	21	22	18	229
<b>2006</b>	14	14	12	21	24	22	20	19	15	14	17	19	211
<b>2007</b>	19	16	32	34	33	30	34	31	15	12	10	8	274
<b>2008</b>	11	9	10	12	12	12	11	13	12	10	8	11	131
<b>2009*</b>	11.2	10	11.0	19.7	17.1	18	16	12	12	10	13.1	13	163.1
<b>2010*</b>	19.9	16.8	13.6	14.6	14	13	13	9	11	12	11	10	157.9
<b>2011</b>	14	12	12	11	9								58

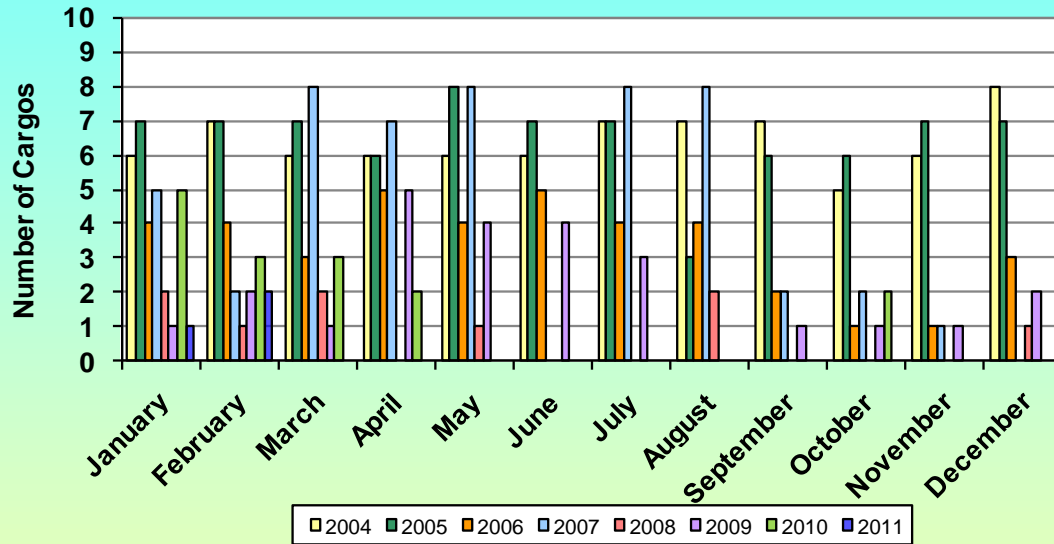
\*Several of the cargos that arrived in 2009 and 2010 were discharged over the course of several months.

# Monthly LNG Imports - All CONUS Terminals 2004 - 2011\*



\*Note that 2011 data is through May.

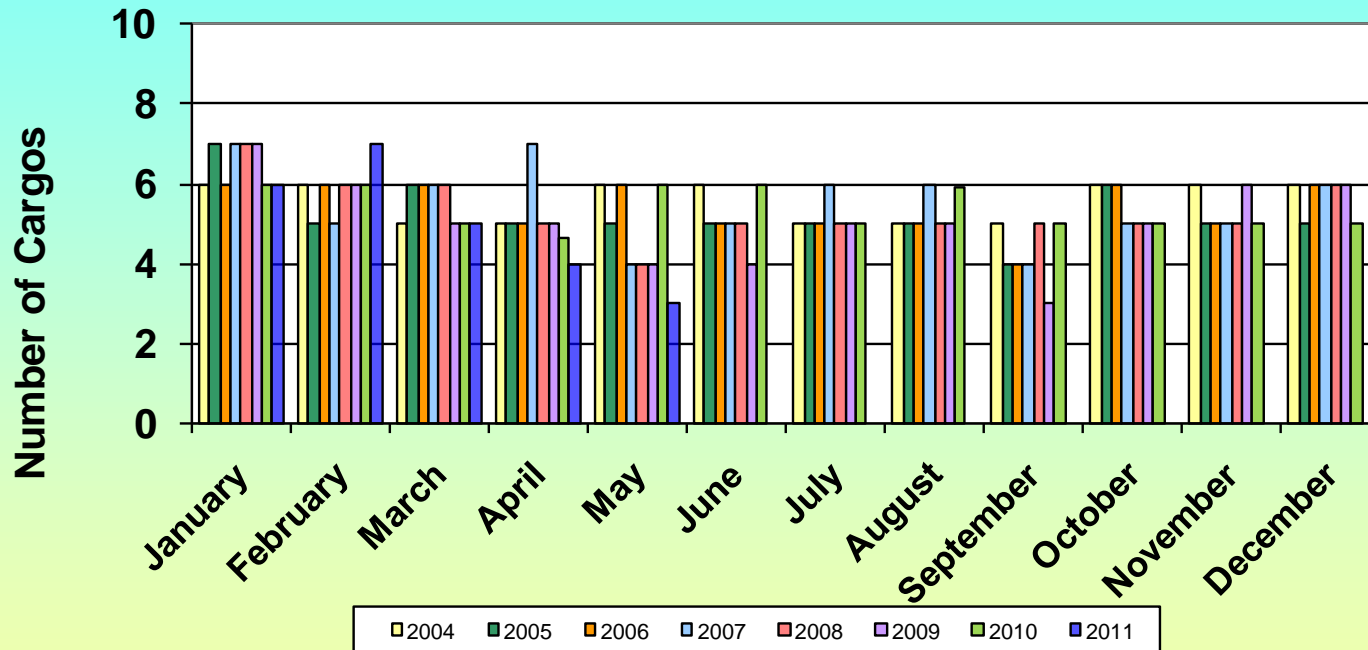
# Monthly LNG Imports - Cove Point 2004-2011\*



\*Note that 2011 data is through May.



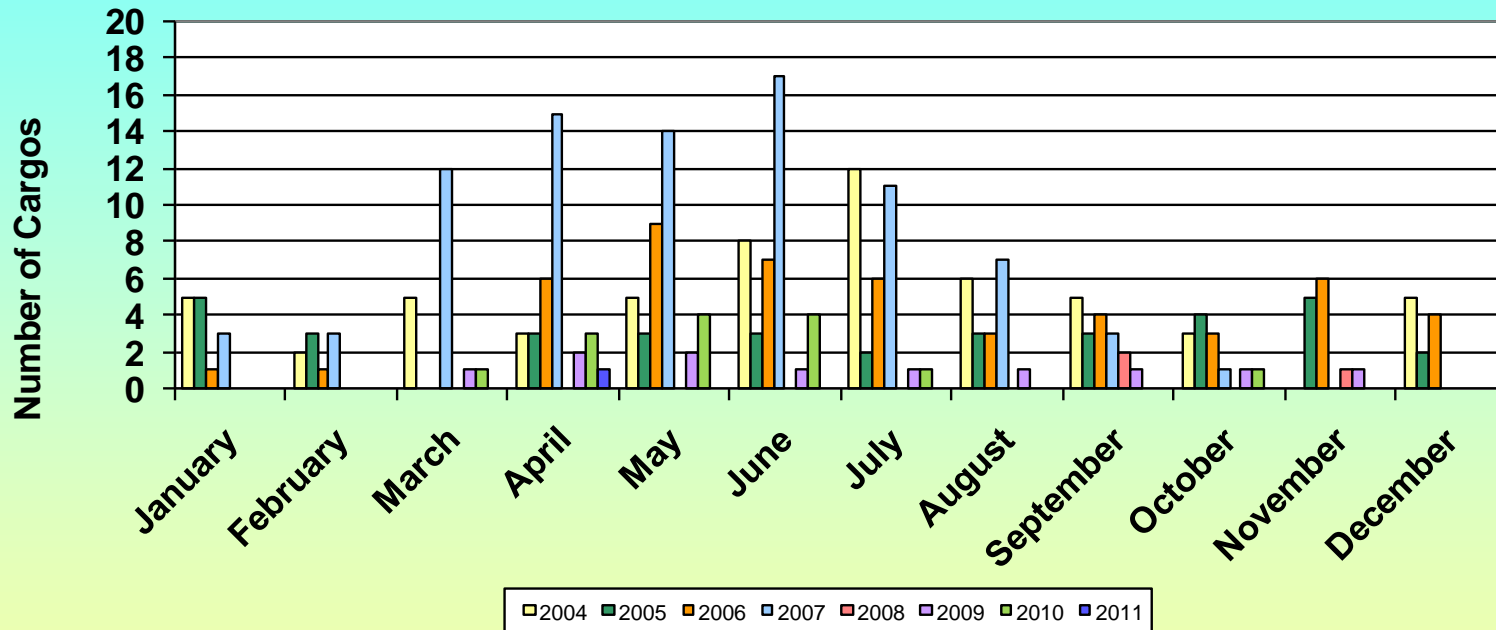
# Monthly LNG Imports - Everett 2004-2011\*



\* Cargo delivered to Everett, MA on April 4, 2010 is the remainder of the cargo that partially discharged at the Neptune DWP on March 10, 2010. Cargo delivered to Everett, MA on August 16, 2010 is a portion of the cargo which completed discharge at the Neptune DWP on August 22, 2010.

\*Note that 2011 data is through May.

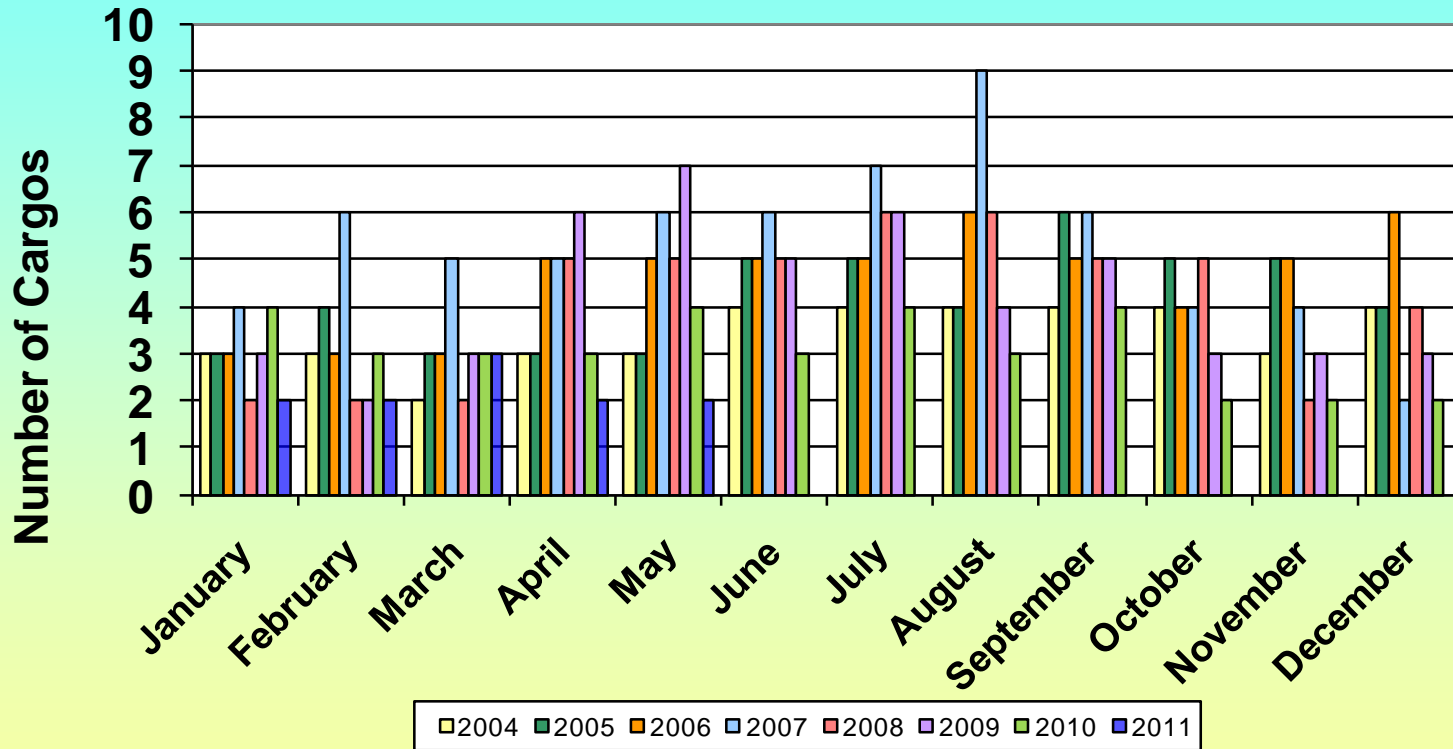
# Monthly LNG Imports - Lake Charles 2004-2011\*



\*Note that 2011 data is through May.

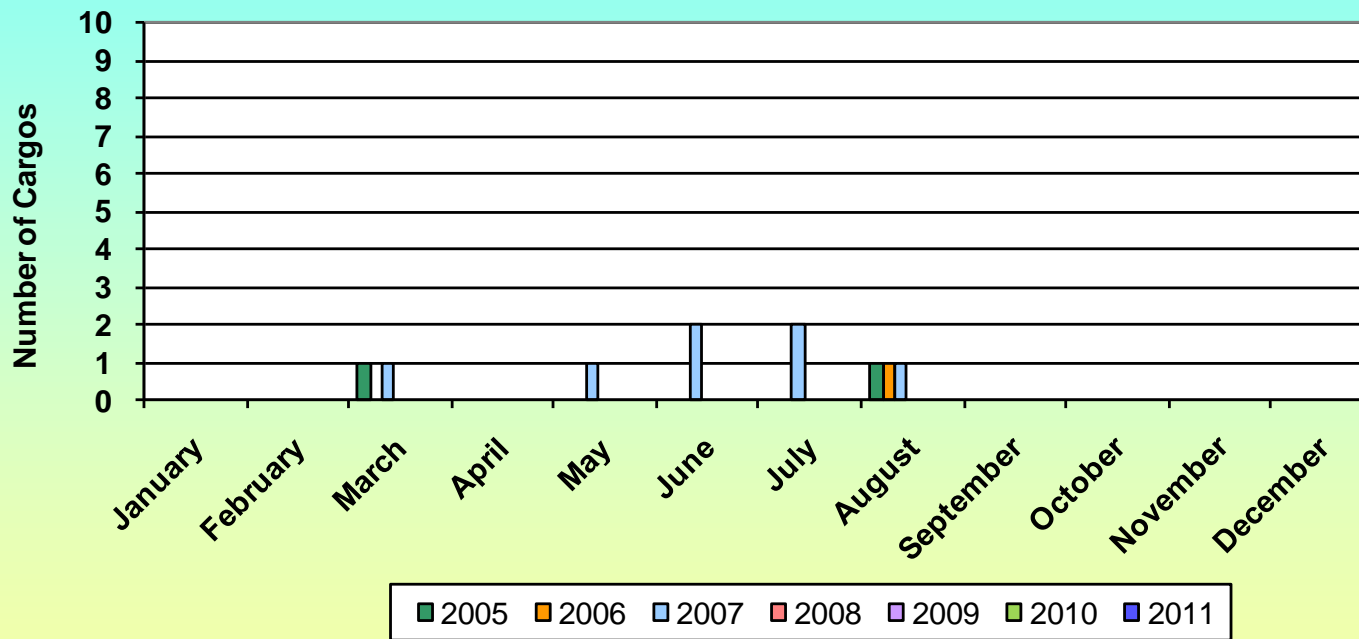


# Monthly LNG Imports - Elba Island 2004-2011\*



\*Note that 2011 data is through May.

# Monthly LNG Imports - Gulf Gateway\* 2005-2011\*\*

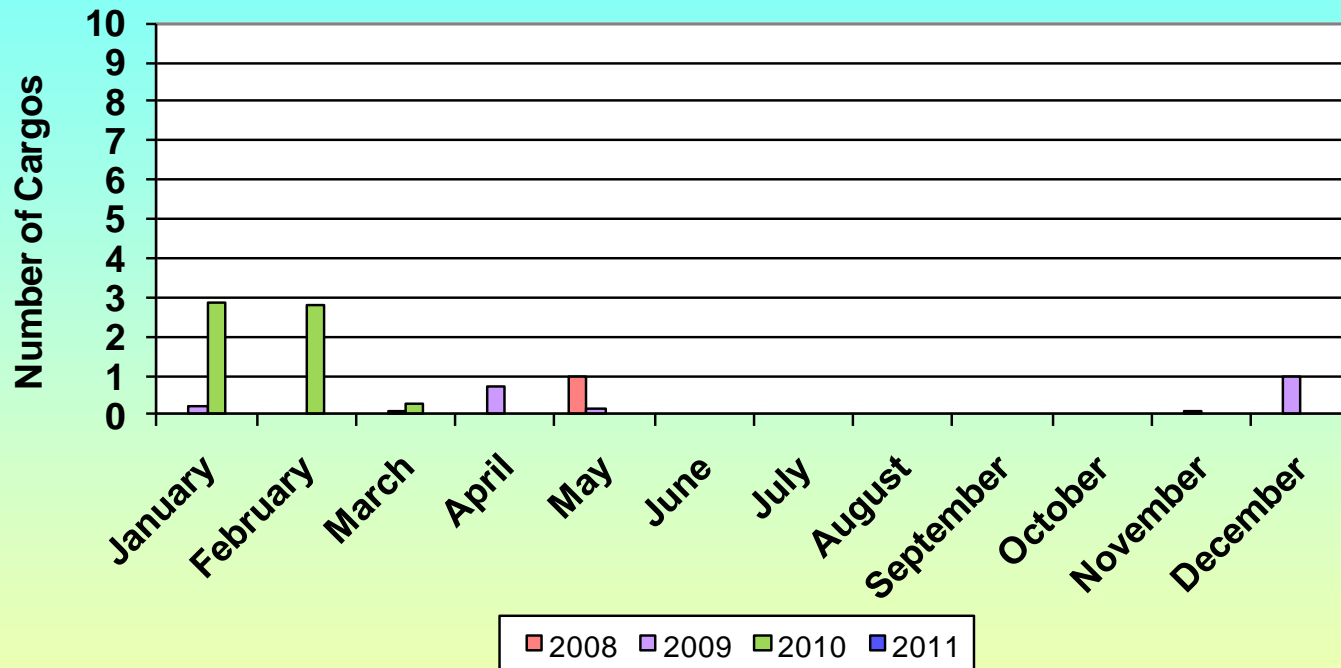


\*Excelerate Energy has announced that it will retire the Gulf Gateway terminal in the near future.

\*\*Note that 2011 data is through May.



# Monthly LNG Imports - Northeast Gateway 2008-2011\*

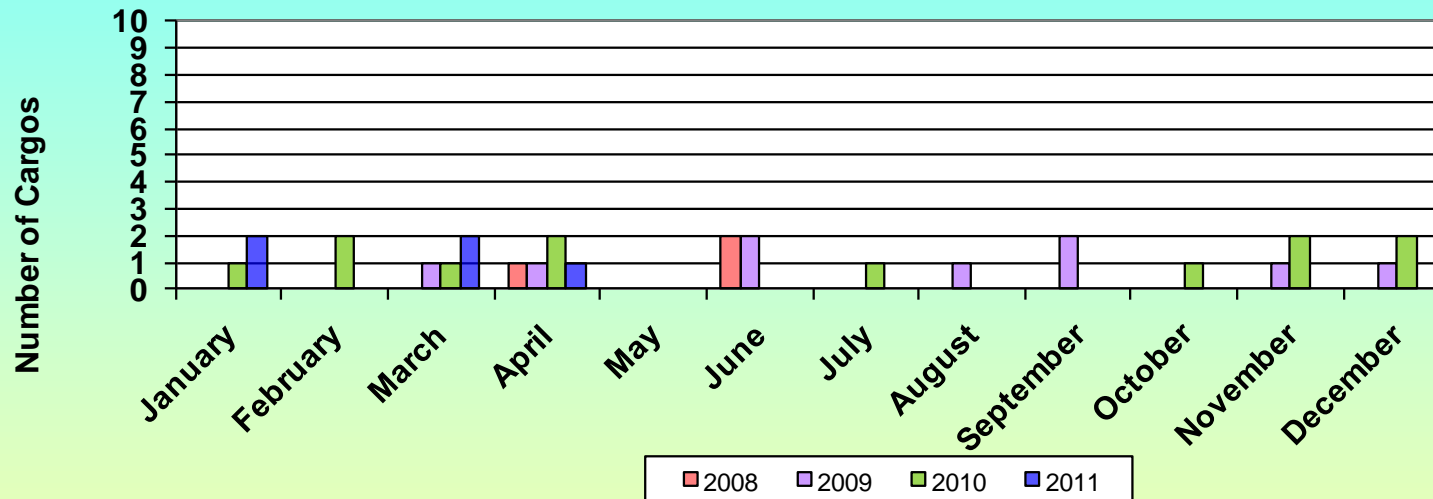


\*Several of the cargos that arrived at Northeast Gateway were discharged over the course of several months. Due to technical problems a cargo that arrived in January 2009 was discharged over the period of January through May 2009. The volume discharged in March was too small to appear on the graph. In November 2009 only a small amount was discharged, the rest of this cargo was discharged in January 2010. The volume discharged in November is too small to appear on the graph. In addition to those outlined above, several other cargos in 2010 were discharged over several months.

\*Note that 2011 data is through May.



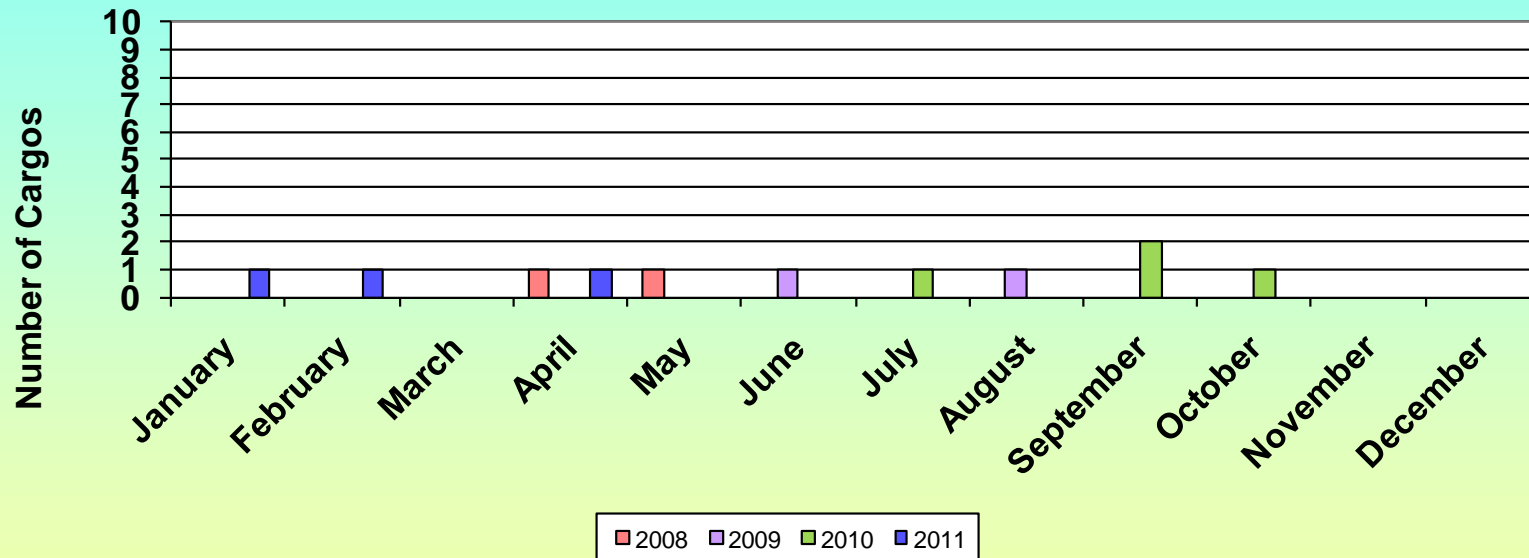
# Monthly LNG Imports - Sabine Pass, LA 2008-2011\*



\*Note that 2011 data is through May.



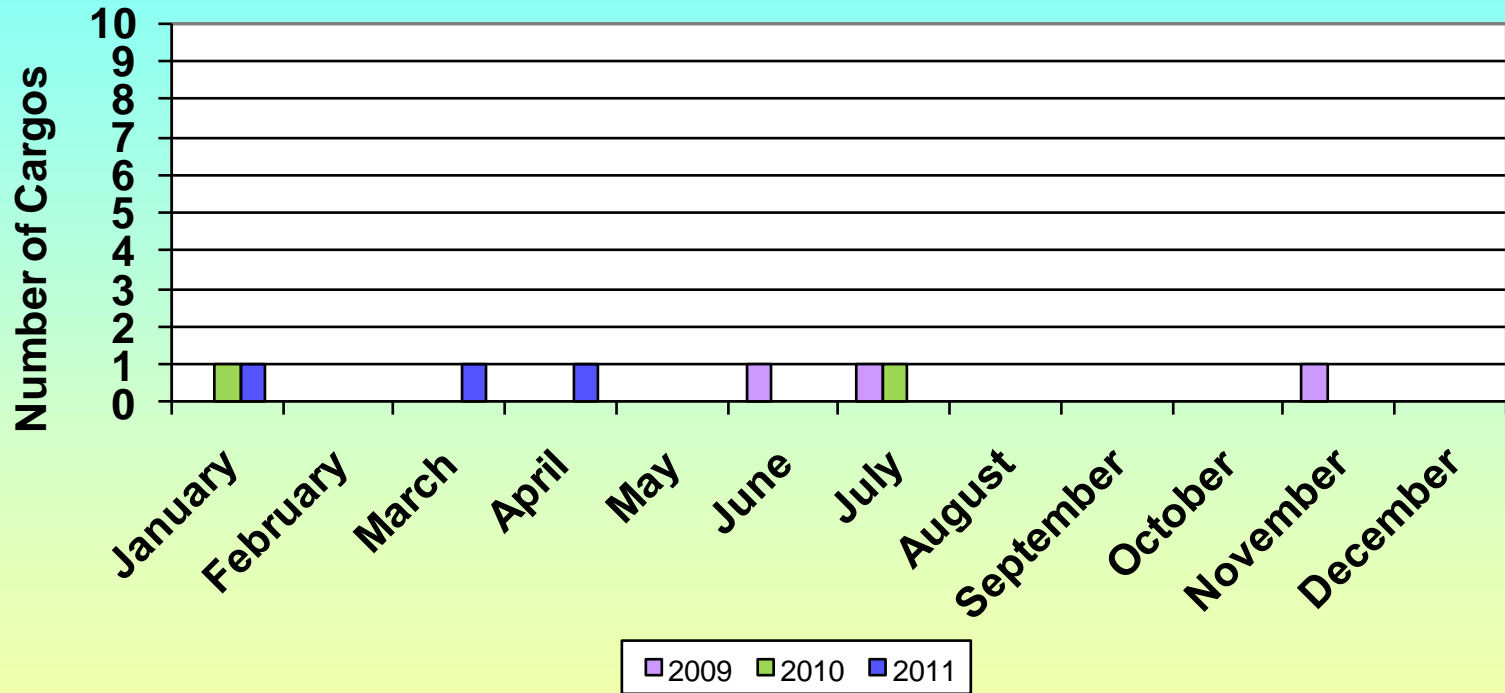
# Monthly LNG Imports - Freeport, TX 2008-2011\*



\*Note that 2011 data is through May.

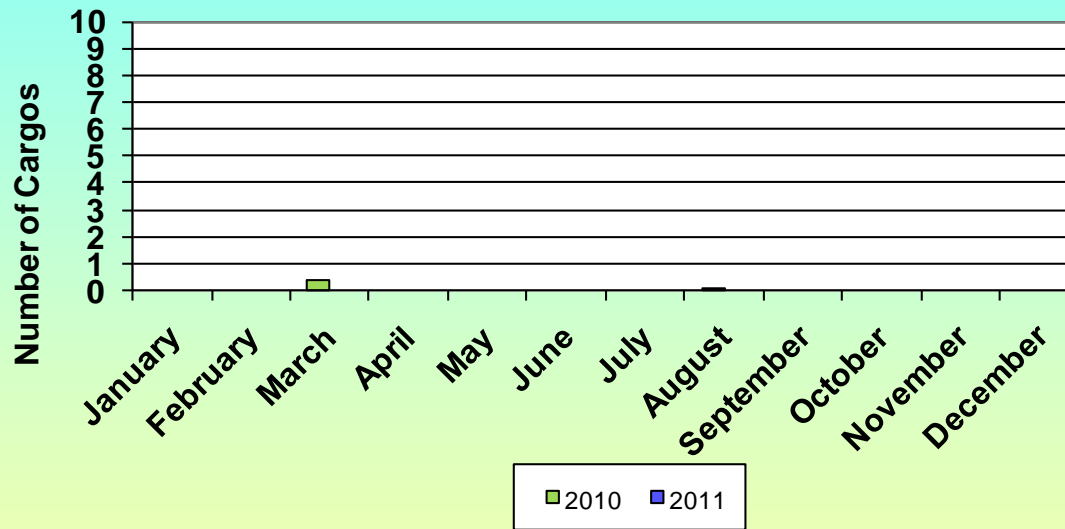


# Monthly LNG Imports - Cameron, LA 2009-2011\*



\*Note that 2011 data is through May.

# Monthly LNG Imports - Neptune Deepwater Port 2011\*

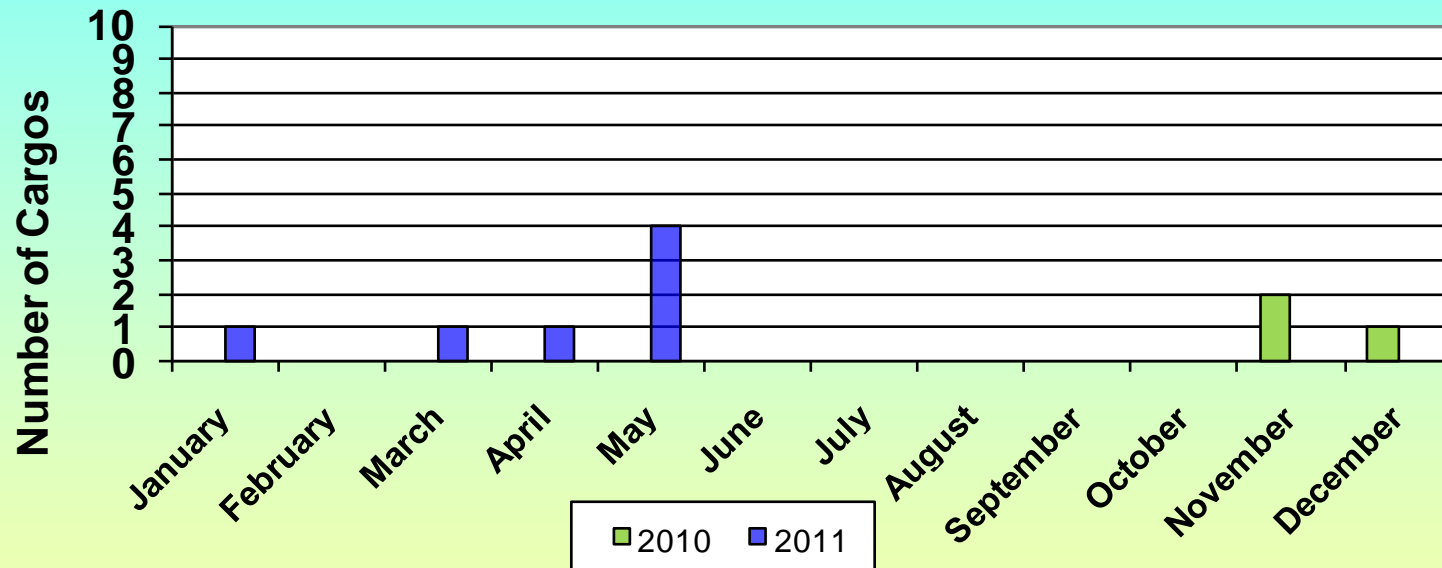


\*Cargo delivered to Neptune DWP on March 10, 2010 was only partially discharged there, the remainder of the cargo was delivered to Everett, MA on April 4, 2010. Cargo delivered to Neptune DWP on August 22, 2010 is the remainder of a cargo delivered to Everett, MA on August 16, 2010.

\*Note that 2011 data is through May.



# Monthly LNG Imports - Golden Pass 2010-2011\*



\*Note that 2011 data is through May.

# LNG Imports by Transaction Type

## All CONUS Terminals (Number of Cargos)

Type	Year	Jan	Feb	Mar	Apr	May	Jun	Jul	Aug	Sep	Oct	Nov	Dec	Totals
Long-Term	2004	6.0	5.3	3.3	5.0	8.7	7.2	8.7	6.5	8.5	5.0	6.1	8.4	78.6
	2005	6.6	6.6	5.5	5.5	6.9	7.5	8.3	5.2	7.0	5.6	4.0	4.0	72.7
	2006	5.9	6.1	5.2	9.4	9.0	11.0	10.0	9.1	10.0	7.8	7.7	10.1	101.2
	2007	9.9	10.0	12.5	14.3	11.0	18.9	16.5	16.1	9.1	5.0	4.0	2.0	129.4
	2008	3.5	3.4	4.2	6.2	7.0	6.4	7.1	8.0	9.7	7.7	6.0	7.0	76.1
	2009	8.0	5.0	5.2	11.6	11.0	10.0	10.0	6.0	8.0	6.0	8.0	7.0	95.8
	2010	7.0	6.0	7.0	8.6	11.0	11.0	11.0	6.0	7.0	6.0	6.0	6.0	92.6
	2011	5.0	6.0	9.0	7.0	8.0								35.0
Short-Term	2004	14.0	12.7	14.7	12.0	11.3	16.8	19.3	15.5	12.5	13.0	8.9	14.6	165.4
	2005	15.4	12.4	11.5	11.5	12.1	12.5	10.7	10.8	12.0	15.4	18.0	14.0	156.3
	2006	7.1	5.9	6.8	9.6	14.0	10.0	8.0	9.9	4.0	6.2	9.3	6.9	97.8
	2007	6.1	6.0	15.5	16.7	19.0	9.1	12.5	10.9	5.9	7.0	6.0	6.0	120.6
	2008	7.5	5.6	5.8	4.8	3.0	5.6	3.9	5.0	2.3	2.3	2.0	4.0	51.9
	2009	3.0	5.0	5.8	5.5	6.0	5.0	5.0	3.0	2.0	3.0	5.0	4.0	52.2
	2010	7.0	5.0	4.4	5.0	2.0	2.0	–	3.0	2.0	4.0	3.0	3.0	40.4
	2011	4.0	5.0	2.0	2.0	–								13.0
Spot*	2006	1.0	2.0	–	2.0	1.0	1.0	2.0	–	1.0	–	–	2.0	12.0
	2007	3.0	–	4.0	3.0	3.0	2.0	5.0	4.0	–	–	–	–	24.0
	2008	–	–	–	1.0	2.0	–	–	–	–	–	–	–	3.0
	2009	0.2	–	0.0	2.7	0.1	3.0	1.0	3.0	2.0	1.0	0.1	2.0	15.1
	2010	5.9	5.8	2.3	1.0	1.0	–	2.0	–	2.0	2.0	2.0	1.0	24.9
	2011	5.0	1.0	1.0	2.0	1.0								10.0

\*Spot cargoes are only identified for 2006 and later years. Prior to 2006, spot cargoes could be included in either long-term or short-term types.

Rev. 7-5-11

# LNG Imports by Transaction Type EVERETT, MA (Number of Cargos)

Type	Year	Jan	Feb	Mar	Apr	May	Jun	Jul	Aug	Sep	Oct	Nov	Dec	Totals
Long-Term	2004	3.0	2.3	1.3	2.0	4.7	3.2	3.7	2.5	4.5	1.0	3.1	2.4	33.6
	2005	2.6	2.6	2.5	2.5	3.9	2.5	3.3	3.2	2.0	2.6	2.0	1.0	30.7
	2006	1.9	3.1	2.2	3.4	2.0	4.0	3.0	3.1	4.0	1.8	1.7	3.1	33.2
	2007	2.9	2.0	1.5	4.3	1.0	3.9	2.5	4.1	2.1	2.0	1.0	2.0	29.4
	2008	3.5	1.4	3.2	2.2	3.0	1.4	2.1	3.0	2.7	2.7	3.0	3.0	31.1
	2009	5.0	3.0	1.2	3.6	2.0	4.0	3.0	1.0	2.0	2.0	4.0	3.0	33.8
	2010	2.0	2.0	3.0	2.6	4.0	4.0	5.0	2.9	3.0	3.0	3.0	4.0	38.5
	2011	3.0	4.0	4.0	3.0	3.0								17.0
Short-Term	2004	3.0	3.7	3.7	3.0	1.3	2.8	1.3	2.5	0.5	5.0	2.9	3.6	33.4
	2005	4.4	2.4	3.5	2.5	1.1	2.5	1.7	1.8	2.0	3.4	3.0	4.0	32.3
	2006	4.1	2.9	3.8	1.6	4.0	1.0	2.0	1.9	–	4.2	3.3	2.9	31.8
	2007	4.1	3.0	4.5	2.7	3.0	1.1	3.5	1.9	1.9	3.0	4.0	4.0	36.6
	2008	3.5	4.6	2.8	2.8	1.0	3.6	2.9	2.0	2.3	2.3	2.0	3.0	32.9
	2009	2.0	3.0	3.8	1.5	2.0	–	2.0	1.0	–	2.0	2.0	2.0	21.2
	2010	2.0	2.0	2.0	2.0	2.0	2.0	–	3.0	2.0	2.0	2.0	1.0	22.0
	2011	3.0	3.0	1.0	1.0	–								8.0
Spot*	2006	–	–	–	–	–	–	–	–	–	–	–	–	–
	2007	–	–	–	–	–	–	–	–	–	–	–	–	–
	2008	–	–	–	–	–	–	–	–	–	–	–	–	–
	2009	–	–	–	–	–	–	–	3.0	1.0	1.0	–	1.0	6.0
	2010	2.0	2.0	–	–	–	–	–	–	–	–	–	–	4.0
	2011	–	–	–	–	–								–

\*Spot cargoes are only identified for 2006 and later years. Prior to 2006, spot cargoes could be included in either long-term or short-term types.

Rev. 7-5-11

# LNG Imports by Transaction Type

## COVE POINT, MD (Number of Cargos)

Type	Year	Jan	Feb	Mar	Apr	May	Jun	Jul	Aug	Sep	Oct	Nov	Dec	Totals
Long-Term	2004	-	-	-	-	-	-	-	-	-	-	-	-	-
	2005	-	-	-	-	-	-	-	-	-	-	-	-	-
	2006	-	-	-	-	-	-	-	-	-	-	-	-	-
	2007	-	-	-	-	-	-	-	-	-	-	-	-	-
	2008	-	-	-	-	-	-	-	-	-	-	-	-	-
	2009	-	-	-	-	-	-	-	-	-	-	-	-	-
	2010	-	-	-	-	-	-	-	-	-	-	-	-	-
	2011	-	-	-	-	-	-	-	-	-	-	-	-	-
Short-Term	2004	6	7	6	6	6	6	7	7	7	5	6	8	77
	2005	7	7	7	6	8	7	7	3	6	6	7	7	78
	2006	3	3	3	3	3	4	2	4	1	1	1	1	29
	2007	2	2	5	4	6	-	5	5	2	2	1	-	34
	2008	2	1	2	-	1	-	-	2	-	-	-	1	9
	2009	1	2	1	4	4	3	2	-	1	1	1	2	22
	2010	4	3	2	2	-	-	-	-	-	2	-	-	13
	2011	1	2	-	-	-	-	-	-	-	-	-	-	3
Spot*	2006	1	1	-	2	1	1	2	-	1	-	-	2	11
	2007	3	-	3	3	2	-	3	3	-	-	-	-	17
	2008	-	-	-	-	-	-	-	-	-	-	-	-	-
	2009	-	-	-	1	-	1	1	-	-	-	-	-	3
	2010	1	-	1	-	-	-	-	-	-	-	-	-	2
	2011	-	-	-	-	-	-	-	-	-	-	-	-	-

\*Spot cargoes are only identified for 2006 and later years. Prior to 2006, spot cargoes could be included in either long-term or short-term types.

Rev. 7-5-11

# LNG Imports by Transaction Type

## ELBA ISLAND, GA (Number of Cargos)

Type	Year	Jan	Feb	Mar	Apr	May	Jun	Jul	Aug	Sep	Oct	Nov	Dec	Totals
Long-Term	2004	3	3	2	3	3	4	4	4	4	4	3	4	41
	2005	3	4	3	3	3	5	5	2	5	3	2	3	41
	2006	3	2	3	3	4	3	4	3	3	3	4	5	40
	2007	4	5	5	5	5	6	7	6	4	3	3	–	53
	2008	–	2	1	4	4	5	5	5	5	5	2	4	42
	2009	3	2	3	6	7	5	6	4	5	3	3	3	50
	2010	4	3	3	3	4	3	4	3	4	2	2	2	37
	2011	2	2	3	2	1								10
Short-Term	2004	–	–	–	–	–	–	–	–	–	–	–	–	–
	2005	–	–	–	–	–	–	–	2	1	2	3	1	9
	2006	–	–	–	2	1	2	1	3	2	1	1	1	14
	2007	–	1	–	–	1	–	–	3	2	1	1	2	11
	2008	2	–	1	1	1	–	1	1	–	–	–	–	7
	2009	–	–	–	–	–	–	–	–	–	–	–	–	–
	2010	–	–	–	–	–	–	–	–	–	–	–	–	–
	2011	–	–	–	–	–								–
Spot*	2006	–	1	–	–	–	–	–	–	–	–	–	–	1
	2007	–	–	–	–	–	–	–	–	–	–	–	–	–
	2008	–	–	–	–	–	–	–	–	–	–	–	–	–
	2009	–	–	–	–	–	–	–	–	–	–	–	–	–
	2010	–	–	–	–	–	–	–	–	–	–	–	–	–
	2011	–	–	–	–	1								1

\*Spot cargos are only identified for 2006 and later years. Prior to 2006, spot cargos could be included in either long-term or short-term types.

Rev.7-5-11

# LNG Imports by Transaction Type

## LAKE CHARLES, LA (Number of Cargos)

Type	Year	Jan	Feb	Mar	Apr	May	Jun	Jul	Aug	Sep	Oct	Nov	Dec	Totals
Long-Term	2004	–	–	–	–	1	–	1	–	–	–	–	2	4
	2005	1	–	–	–	–	–	–	–	–	–	–	–	1
	2006	1	1	–	3	3	4	3	3	3	3	2	2	28
	2007	3	3	6	5	5	9	7	6	3	–	–	–	47
	2008	–	–	–	–	–	–	–	–	2	–	1	–	3
	2009	–	–	1	2	2	1	1	1	1	1	1	–	11
	2010	–	–	1	2	3	4	1	–	–	1	–	–	12
	2011	–	–	–	1	–	–	–	–	–	–	–	–	1
Short-Term	2004	5	2	5	3	4	8	11	6	5	3	–	3	55
	2005	4	3	–	3	3	3	2	3	3	4	5	2	35
	2006	–	–	–	3	6	3	3	–	1	–	4	2	22
	2007	–	–	6	10	9	8	4	1	–	1	–	–	39
	2008	–	–	–	–	–	–	–	–	–	–	–	–	–
	2009	–	–	–	–	–	–	–	–	–	–	–	–	–
	2010	–	–	–	–	–	–	–	–	–	–	–	–	–
	2011	–	–	–	–	–	–	–	–	–	–	–	–	–
Spot*	2006	–	–	–	–	–	–	–	–	–	–	–	–	–
	2007	–	–	–	–	–	–	–	–	–	–	–	–	–
	2008	–	–	–	–	–	–	–	–	–	–	–	–	–
	2009	–	–	–	–	–	–	–	–	–	–	–	–	–
	2010	–	–	–	1	1	–	–	–	–	–	–	–	2
	2011	–	–	–	–	–	–	–	–	–	–	–	–	–

\*Spot cargos are only identified for 2006 and later years. Prior to 2006, spot cargos could be included in either long-term or short-term types.

Rev. 7-5-11

# LNG Imports by Transaction Type

## GULF GATEWAY (Number of Cargos)

Type	Year	Jan	Feb	Mar	Apr	May	Jun	Jul	Aug	Sep	Oct	Nov	Dec	Totals
Long-Term	2004	N/A	N/A	N/A	N/A	N/A	N/A	N/A	N/A	N/A	N/A	N/A	N/A	N/A
	2005	N/A	N/A	-	-	-	-	-	-	-	-	-	-	-
	2006	-	-	-	-	-	-	-	-	-	-	-	-	-
	2007	-	-	-	-	-	-	-	-	-	-	-	-	-
	2008	-	-	-	-	-	-	-	-	-	-	-	-	-
	2009	-	-	-	-	-	-	-	-	-	-	-	-	-
	2010	-	-	-	-	-	-	-	-	-	-	-	-	-
	2011	-	-	-	-	-	-	-	-	-	-	-	-	-
Short-Term	2004	N/A	N/A	N/A	N/A	N/A	N/A	N/A	N/A	N/A	N/A	N/A	N/A	N/A
	2005	N/A	N/A	1	-	-	-	-	1	-	-	-	-	2
	2006	-	-	-	-	-	-	-	1	-	-	-	-	1
	2007	-	-	-	-	-	-	-	-	-	-	-	-	-
	2008	-	-	-	-	-	-	-	-	-	-	-	-	-
	2009	-	-	-	-	-	-	-	-	-	-	-	-	-
	2010	-	-	-	-	-	-	-	-	-	-	-	-	-
	2011	-	-	-	-	-	-	-	-	-	-	-	-	-
Spot*	2006	-	-	-	-	-	-	-	-	-	-	-	-	-
	2007	-	-	1	-	1	2	2	1	-	-	-	-	7
	2008	-	-	-	-	-	-	-	-	-	-	-	-	-
	2009	-	-	-	-	-	-	-	-	-	-	-	-	-
	2010	-	-	-	-	-	-	-	-	-	-	-	-	-
	2011	-	-	-	-	-	-	-	-	-	-	-	-	-

Gulf Gateway received its first cargo in March 2005. Excelerate Energy has announced that it will retire the Gulf Gateway terminal in the near future.

\*Spot cargos are only identified for 2006 and later years. Prior to 2006, spot cargos could be included in either long-term or short-term types.

# LNG Imports by Transaction Type

## NORTHEAST GATEWAY (Number of Cargos)

Type	Year	Jan	Feb	Mar	Apr	May	Jun	Jul	Aug	Sep	Oct	Nov	Dec	Totals
Long-Term	2004	N/A	N/A	N/A	N/A	N/A	N/A	N/A	N/A	N/A	N/A	N/A	N/A	N/A
	2005	N/A	N/A	N/A	N/A	N/A	N/A	N/A	N/A	N/A	N/A	N/A	N/A	N/A
	2006	N/A	N/A	N/A	N/A	N/A	N/A	N/A	N/A	N/A	N/A	N/A	N/A	N/A
	2007	N/A	N/A	N/A	N/A	N/A	N/A	N/A	N/A	N/A	N/A	N/A	N/A	N/A
	2008	N/A	N/A	N/A	N/A	–	–	–	–	–	–	–	–	–
	2009	–	–	–	–	–	–	–	–	–	–	–	–	–
	2010	–	–	–	–	–	–	–	–	–	–	–	–	–
	2011	–	–	–	–	–	–	–	–	–	–	–	–	–
Short-Term	2004	N/A	N/A	N/A	N/A	N/A	N/A	N/A	N/A	N/A	N/A	N/A	N/A	N/A
	2005	N/A	N/A	N/A	N/A	N/A	N/A	N/A	N/A	N/A	N/A	N/A	N/A	N/A
	2006	N/A	N/A	N/A	N/A	N/A	N/A	N/A	N/A	N/A	N/A	N/A	N/A	N/A
	2007	N/A	N/A	N/A	N/A	N/A	N/A	N/A	N/A	N/A	N/A	N/A	N/A	N/A
	2008	N/A	N/A	N/A	N/A	–	–	–	–	–	–	–	–	–
	2009	–	–	–	–	–	–	–	–	–	–	–	–	–
	2010	–	–	–	–	–	–	–	–	–	–	–	–	–
	2011	–	–	–	–	–	–	–	–	–	–	–	–	–
Spot*	2006	N/A	N/A	N/A	N/A	N/A	N/A	N/A	N/A	N/A	N/A	N/A	N/A	N/A
	2007	N/A	N/A	N/A	N/A	N/A	N/A	N/A	N/A	N/A	N/A	N/A	N/A	N/A
	2008	N/A	N/A	N/A	N/A	1	–	–	–	–	–	–	–	1
	2009	0.2	–	0.0	0.7	0.1	–	–	–	–	–	0.1	1.0	2.1
	2010	2.9	2.8	0.3	–	–	–	–	–	–	–	–	–	5.9
	2011	–	–	–	–	–	–	–	–	–	–	–	–	–

Northeast Gateway received its first cargo in May 2008. In 2009 and 2010, several cargoes that arrived at Northeast Gateway were discharged over the course of several months. \*Spot cargoes are only identified for 2006 and later years. Prior to 2006, spot cargoes could be included in either long-term or short-term types.

# LNG Imports by Transaction Type

## SABINE PASS, LA (Number of Cargos)

Type	Year	Jan	Feb	Mar	Apr	May	Jun	Jul	Aug	Sep	Oct	Nov	Dec	Totals
Long-Term	2004	N/A	N/A	N/A	N/A	N/A	N/A	N/A	N/A	N/A	N/A	N/A	N/A	N/A
	2005	N/A	N/A	N/A	N/A	N/A	N/A	N/A	N/A	N/A	N/A	N/A	N/A	N/A
	2006	N/A	N/A	N/A	N/A	N/A	N/A	N/A	N/A	N/A	N/A	N/A	N/A	N/A
	2007	N/A	N/A	N/A	N/A	N/A	N/A	N/A	N/A	N/A	N/A	N/A	N/A	N/A
	2008	N/A	N/A	N/A	–	–	–	–	–	–	–	–	–	–
	2009	–	–	–	–	–	–	–	–	–	–	–	1	1
	2010	1	1	–	1	–	–	1	–	–	–	1	–	5
	2011	–	–	2	1	–	–	–	–	–	–	–	–	3
Short-Term	2004	N/A	N/A	N/A	N/A	N/A	N/A	N/A	N/A	N/A	N/A	N/A	N/A	N/A
	2005	N/A	N/A	N/A	N/A	N/A	N/A	N/A	N/A	N/A	N/A	N/A	N/A	N/A
	2006	N/A	N/A	N/A	N/A	N/A	N/A	N/A	N/A	N/A	N/A	N/A	N/A	N/A
	2007	N/A	N/A	N/A	N/A	N/A	N/A	N/A	N/A	N/A	N/A	N/A	N/A	N/A
	2008	N/A	N/A	N/A	1	–	2	–	–	–	–	–	–	3
	2009	–	–	1	–	–	1	–	1	1	–	1	–	5
	2010	–	–	–	1	–	–	–	–	–	–	1	2	4
	2011	–	–	–	–	–	–	–	–	–	–	–	–	–
Spot*	2006	N/A	N/A	N/A	N/A	N/A	N/A	N/A	N/A	N/A	N/A	N/A	N/A	N/A
	2007	N/A	N/A	N/A	N/A	N/A	N/A	N/A	N/A	N/A	N/A	N/A	N/A	N/A
	2008	N/A	N/A	N/A	–	–	–	–	–	–	–	–	–	–
	2009	–	–	–	1	–	1	–	–	1	–	–	–	3
	2010	–	1	1	–	–	–	–	–	–	1	–	–	3
	2011	2	–	–	–	–	–	–	–	–	–	–	–	2

Sabine Pass received its first cargo in April 2008.

\*Spot cargos are only identified for 2006 and later years. Prior to 2006, spot cargos could be included in either long-term or short-term types.

# LNG Imports by Transaction Type

## FREEPORT, TX (Number of Cargos)

Type	Year	Jan	Feb	Mar	Apr	May	Jun	Jul	Aug	Sep	Oct	Nov	Dec	Totals
Long-Term	2004	N/A	N/A	N/A	N/A	N/A	N/A	N/A	N/A	N/A	N/A	N/A	N/A	N/A
	2005	N/A	N/A	N/A	N/A	N/A	N/A	N/A	N/A	N/A	N/A	N/A	N/A	N/A
	2006	N/A	N/A	N/A	N/A	N/A	N/A	N/A	N/A	N/A	N/A	N/A	N/A	N/A
	2007	N/A	N/A	N/A	N/A	N/A	N/A	N/A	N/A	N/A	N/A	N/A	N/A	N/A
	2008	N/A	N/A	N/A	-	-	-	-	-	-	-	-	-	-
	2009	-	-	-	-	-	-	-	-	-	-	-	-	-
	2010	-	-	-	-	-	-	-	-	-	-	-	-	-
	2011	-	-	-	-	-	-	-	-	-	-	-	-	-
Short-Term	2004	N/A	N/A	N/A	N/A	N/A	N/A	N/A	N/A	N/A	N/A	N/A	N/A	N/A
	2005	N/A	N/A	N/A	N/A	N/A	N/A	N/A	N/A	N/A	N/A	N/A	N/A	N/A
	2006	N/A	N/A	N/A	N/A	N/A	N/A	N/A	N/A	N/A	N/A	N/A	N/A	N/A
	2007	N/A	N/A	N/A	N/A	N/A	N/A	N/A	N/A	N/A	N/A	N/A	N/A	N/A
	2008	N/A	N/A	N/A	-	-	-	-	-	-	-	-	-	-
	2009	-	-	-	-	-	-	-	1	-	-	-	-	1
	2010	-	-	-	-	-	-	-	-	-	-	-	-	-
	2011	-	-	-	-	-	-	-	-	-	-	-	-	-
Spot*	2006	N/A	N/A	N/A	N/A	N/A	N/A	N/A	N/A	N/A	N/A	N/A	N/A	N/A
	2007	N/A	N/A	N/A	N/A	N/A	N/A	N/A	N/A	N/A	N/A	N/A	N/A	N/A
	2008	N/A	N/A	N/A	1	1	-	-	-	-	-	-	-	2
	2009	-	-	-	-	-	1	-	-	-	-	-	-	1
	2010	-	-	-	-	-	-	1	-	2	1	-	-	4
	2011	1	1	-	1	-	-	-	-	-	-	-	-	3

Freeport received its first cargo in April 2008.

\*Spot cargos are only identified for 2006 and later years. Prior to 2006, spot cargos could be included in either long-term or short-term types.

Rev. 7-5-11

# LNG Imports by Transaction Type CAMERON, LA (Number of Cargos)

Type	Year	Jan	Feb	Mar	Apr	May	Jun	Jul	Aug	Sep	Oct	Nov	Dec	Totals
Long-Term	2004	N/A	N/A	N/A	N/A	N/A	N/A	N/A	N/A	N/A	N/A	N/A	N/A	N/A
	2005	N/A	N/A	N/A	N/A	N/A	N/A	N/A	N/A	N/A	N/A	N/A	N/A	N/A
	2006	N/A	N/A	N/A	N/A	N/A	N/A	N/A	N/A	N/A	N/A	N/A	N/A	N/A
	2007	N/A	N/A	N/A	N/A	N/A	N/A	N/A	N/A	N/A	N/A	N/A	N/A	N/A
	2008	N/A	N/A	N/A	N/A	N/A	N/A	N/A	N/A	N/A	N/A	N/A	N/A	N/A
	2009	N/A	N/A	N/A	N/A	N/A	–	–	–	–	–	–	–	–
	2010	–	–	–	–	–	–	–	–	–	–	–	–	–
	2011	–	–	–	–	–								–
Short-Term	2004	N/A	N/A	N/A	N/A	N/A	N/A	N/A	N/A	N/A	N/A	N/A	N/A	N/A
	2005	N/A	N/A	N/A	N/A	N/A	N/A	N/A	N/A	N/A	N/A	N/A	N/A	N/A
	2006	N/A	N/A	N/A	N/A	N/A	N/A	N/A	N/A	N/A	N/A	N/A	N/A	N/A
	2007	N/A	N/A	N/A	N/A	N/A	N/A	N/A	N/A	N/A	N/A	N/A	N/A	N/A
	2008	N/A	N/A	N/A	N/A	N/A	N/A	N/A	N/A	N/A	N/A	N/A	N/A	N/A
	2009	N/A	N/A	N/A	N/A	N/A	1	1	–	–	–	1	–	3
	2010	1	–	–	–	–	–	–	–	–	–	–	–	1
	2011	–	–	1	1	–								2
Spot*	2006	N/A	N/A	N/A	N/A	N/A	N/A	N/A	N/A	N/A	N/A	N/A	N/A	N/A
	2007	N/A	N/A	N/A	N/A	N/A	N/A	N/A	N/A	N/A	N/A	N/A	N/A	N/A
	2008	N/A	N/A	N/A	N/A	N/A	N/A	N/A	N/A	N/A	N/A	N/A	N/A	N/A
	2009	N/A	N/A	N/A	N/A	N/A	–	–	–	–	–	–	–	–
	2010	–	–	–	–	–	–	1	–	–	–	–	–	1
	2011	1	–	–	–	–								1

Cameron received its first cargo in June 2009.

\*Spot cargos are only identified for 2006 and later years. Prior to 2006, spot cargos could be included in either long-term or short-term types.

# LNG Imports by Transaction Type

## NEPTUNE DWP (Number of Cargos)

Type	Year	Jan	Feb	Mar	Apr	May	Jun	Jul	Aug	Sep	Oct	Nov	Dec	Totals
Long-Term	2004	N/A	N/A	N/A	N/A	N/A	N/A	N/A	N/A	N/A	N/A	N/A	N/A	N/A
	2005	N/A	N/A	N/A	N/A	N/A	N/A	N/A	N/A	N/A	N/A	N/A	N/A	N/A
	2006	N/A	N/A	N/A	N/A	N/A	N/A	N/A	N/A	N/A	N/A	N/A	N/A	N/A
	2007	N/A	N/A	N/A	N/A	N/A	N/A	N/A	N/A	N/A	N/A	N/A	N/A	N/A
	2008	N/A	N/A	N/A	N/A	N/A	N/A	N/A	N/A	N/A	N/A	N/A	N/A	N/A
	2009	N/A	N/A	N/A	N/A	N/A	N/A	N/A	N/A	N/A	N/A	N/A	N/A	N/A
	2010	N/A	N/A	–	–	–	–	–	0.1	–	–	–	–	0.1
	2011	–	–	–	–	–								–
Short-Term	2004	N/A	N/A	N/A	N/A	N/A	N/A	N/A	N/A	N/A	N/A	N/A	N/A	N/A
	2005	N/A	N/A	N/A	N/A	N/A	N/A	N/A	N/A	N/A	N/A	N/A	N/A	N/A
	2006	N/A	N/A	N/A	N/A	N/A	N/A	N/A	N/A	N/A	N/A	N/A	N/A	N/A
	2007	N/A	N/A	N/A	N/A	N/A	N/A	N/A	N/A	N/A	N/A	N/A	N/A	N/A
	2008	N/A	N/A	N/A	N/A	N/A	N/A	N/A	N/A	N/A	N/A	N/A	N/A	N/A
	2009	N/A	N/A	N/A	N/A	N/A	N/A	N/A	N/A	N/A	N/A	N/A	N/A	N/A
	2010	N/A	N/A	0.4	–	–	–	–	–	–	–	–	–	0.4
	2011	–	–	–	–	–								–
Spot*	2006	N/A	N/A	N/A	N/A	N/A	N/A	N/A	N/A	N/A	N/A	N/A	N/A	N/A
	2007	N/A	N/A	N/A	N/A	N/A	N/A	N/A	N/A	N/A	N/A	N/A	N/A	N/A
	2008	N/A	N/A	N/A	N/A	N/A	N/A	N/A	N/A	N/A	N/A	N/A	N/A	N/A
	2009	N/A	N/A	N/A	N/A	N/A	N/A	N/A	N/A	N/A	N/A	N/A	N/A	N/A
	2010	N/A	N/A	–	–	–	–	–	–	–	–	–	–	–
	2011	–	–	–	–	–								–

Neptune received its first cargo in March 2010. That cargo and one other were partially discharged at Everett, MA.

\*Spot cargos are only identified for 2006 and later years. Prior to 2006, spot cargos could be included in either long-term or short-term types.

# LNG Imports by Transaction Type

## GOLDEN PASS (Number of Cargos)

Type	Year	Jan	Feb	Mar	Apr	May	Jun	Jul	Aug	Sep	Oct	Nov	Dec	Totals	
Long-Term	2004	N/A	N/A	N/A	N/A	N/A	N/A	N/A	N/A	N/A	N/A	N/A	N/A	N/A	
	2005	N/A	N/A	N/A	N/A	N/A	N/A	N/A	N/A	N/A	N/A	N/A	N/A	N/A	
	2006	N/A	N/A	N/A	N/A	N/A	N/A	N/A	N/A	N/A	N/A	N/A	N/A	N/A	
	2007	N/A	N/A	N/A	N/A	N/A	N/A	N/A	N/A	N/A	N/A	N/A	N/A	N/A	
	2008	N/A	N/A	N/A	N/A	N/A	N/A	N/A	N/A	N/A	N/A	N/A	N/A	N/A	
	2009	N/A	N/A	N/A	N/A	N/A	N/A	N/A	N/A	N/A	N/A	N/A	N/A	N/A	
	2010	N/A	N/A	N/A	N/A	N/A	N/A	N/A	N/A	N/A	N/A	N/A	–	–	–
	2011	–	–	–	–	4								4	
Short-Term	2004	N/A	N/A	N/A	N/A	N/A	N/A	N/A	N/A	N/A	N/A	N/A	N/A	N/A	
	2005	N/A	N/A	N/A	N/A	N/A	N/A	N/A	N/A	N/A	N/A	N/A	N/A	N/A	
	2006	N/A	N/A	N/A	N/A	N/A	N/A	N/A	N/A	N/A	N/A	N/A	N/A	N/A	
	2007	N/A	N/A	N/A	N/A	N/A	N/A	N/A	N/A	N/A	N/A	N/A	N/A	N/A	
	2008	N/A	N/A	N/A	N/A	N/A	N/A	N/A	N/A	N/A	N/A	N/A	N/A	N/A	
	2009	N/A	N/A	N/A	N/A	N/A	N/A	N/A	N/A	N/A	N/A	N/A	N/A	N/A	
	2010	N/A	N/A	N/A	N/A	N/A	N/A	N/A	N/A	N/A	N/A	N/A	–	–	–
	2011	–	–	–	–	–								–	
Spot*	2006	N/A	N/A	N/A	N/A	N/A	N/A	N/A	N/A	N/A	N/A	N/A	N/A	N/A	
	2007	N/A	N/A	N/A	N/A	N/A	N/A	N/A	N/A	N/A	N/A	N/A	N/A	N/A	
	2008	N/A	N/A	N/A	N/A	N/A	N/A	N/A	N/A	N/A	N/A	N/A	N/A	N/A	
	2009	N/A	N/A	N/A	N/A	N/A	N/A	N/A	N/A	N/A	N/A	N/A	N/A	N/A	
	2010	N/A	N/A	N/A	N/A	N/A	N/A	N/A	N/A	N/A	N/A	N/A	2	1	3
	2011	1	–	1	1	–								3	

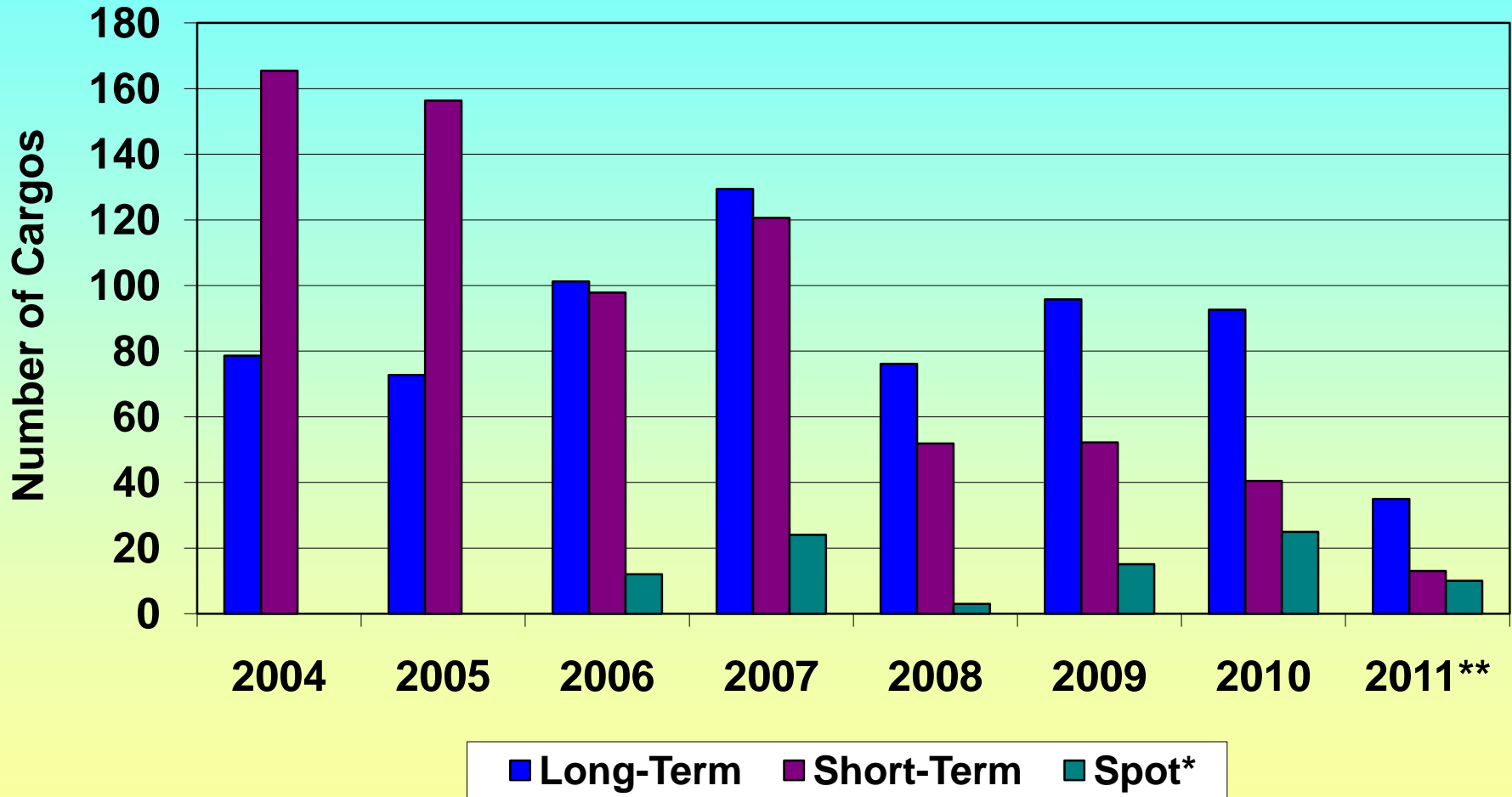
Golden Pass received its first cargo in November 2010.

\*Spot cargos are only identified for 2006 and later years. Prior to 2006, spot cargos could be included in either long-term or short-term types.

Rev. 7-5-11



# LNG Imports by Transaction Type All CONUS Terminals - 2004 - 2011

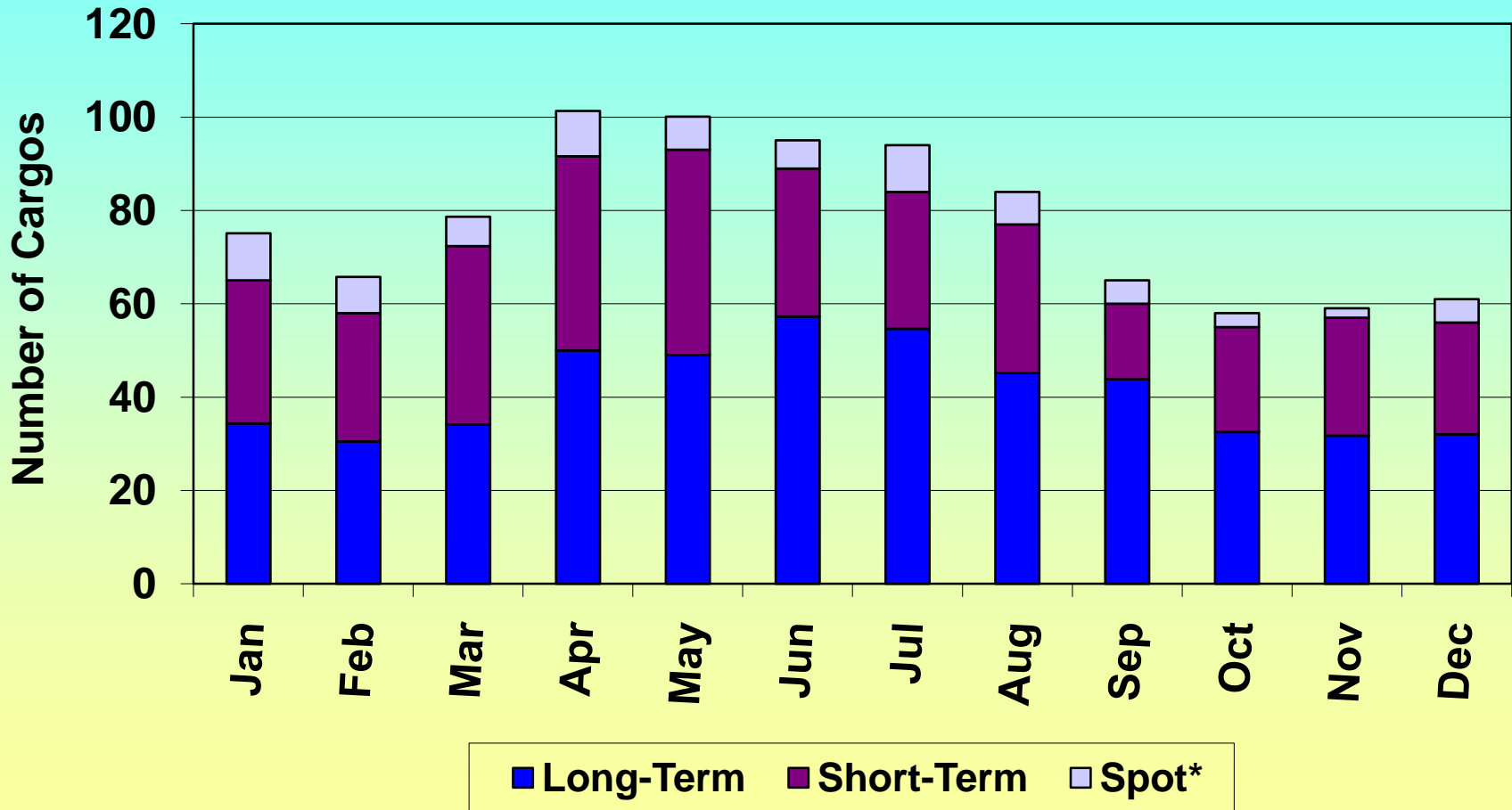


\*Spot cargoes are only identified for 2006 and later years. Prior to 2006, spot cargoes could be included in either long-term or short-term types.

\*\*2011 data is year-to-date.



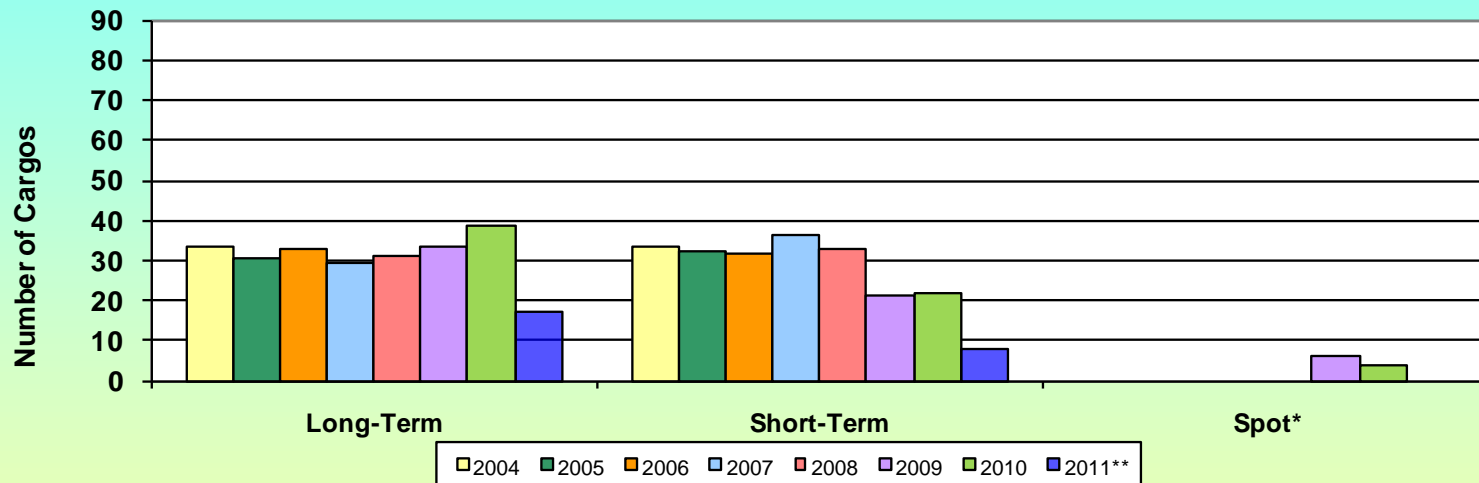
# LNG Imports by Transaction Type All CONUS Terminals - 2006 - 2010



\*Spot cargoes are only identified for 2006 and later years. Prior to 2006, spot cargoes could be included in either long-term or short-term types.



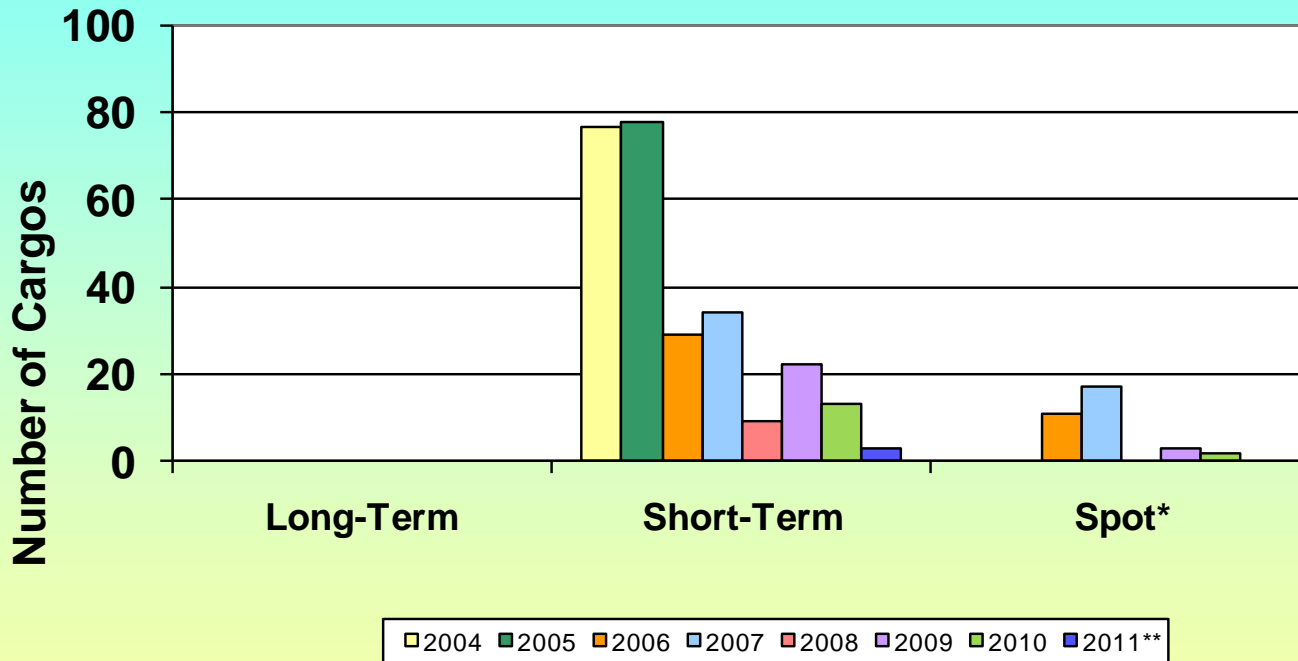
# LNG Imports by Transaction Type - Everett 2004-2011



\*Spot cargos are only identified for 2006 and later years. Prior to 2006, spot cargos could be included in either long-term or short-term types.

\*\*2011 data is through May.

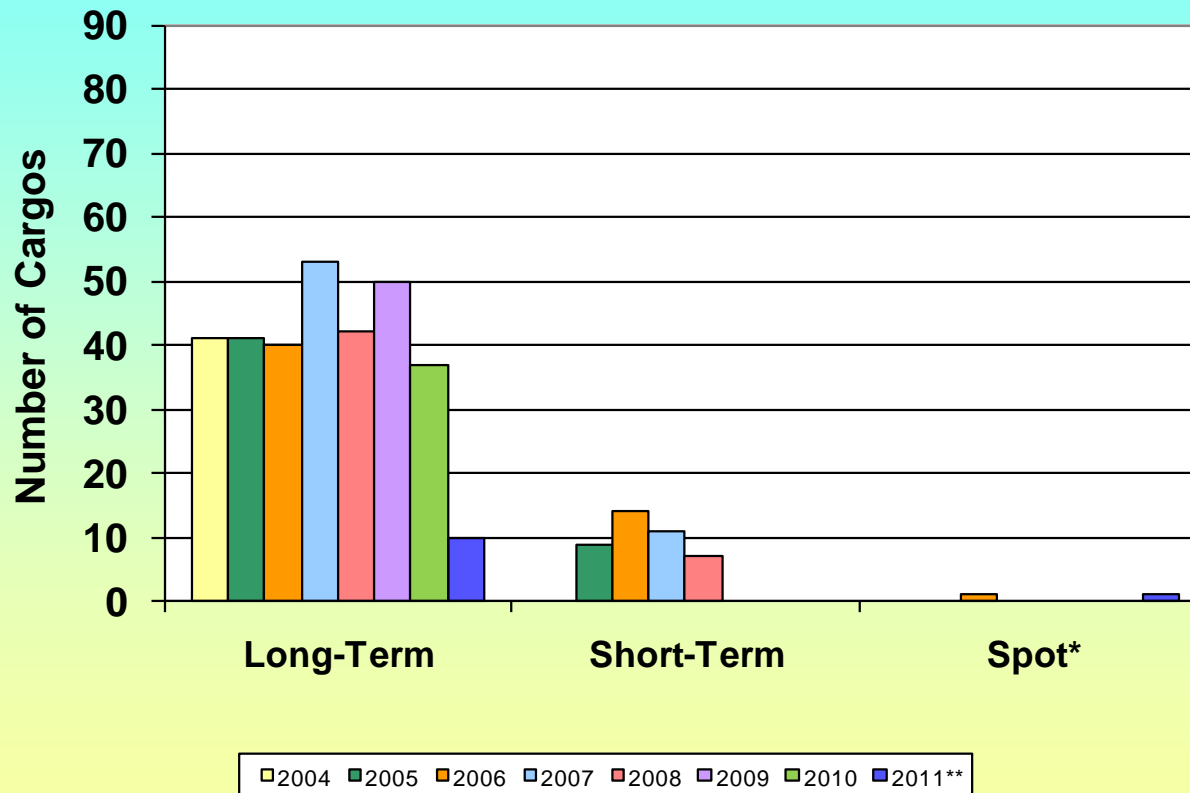
# LNG Imports by Transaction Type - Cove Point 2004-2011



\*Spot cargoes are only identified for 2006 and later years. Prior to 2006, spot cargoes could be included in either long-term or short-term types.

\*\*2011 data is through May.

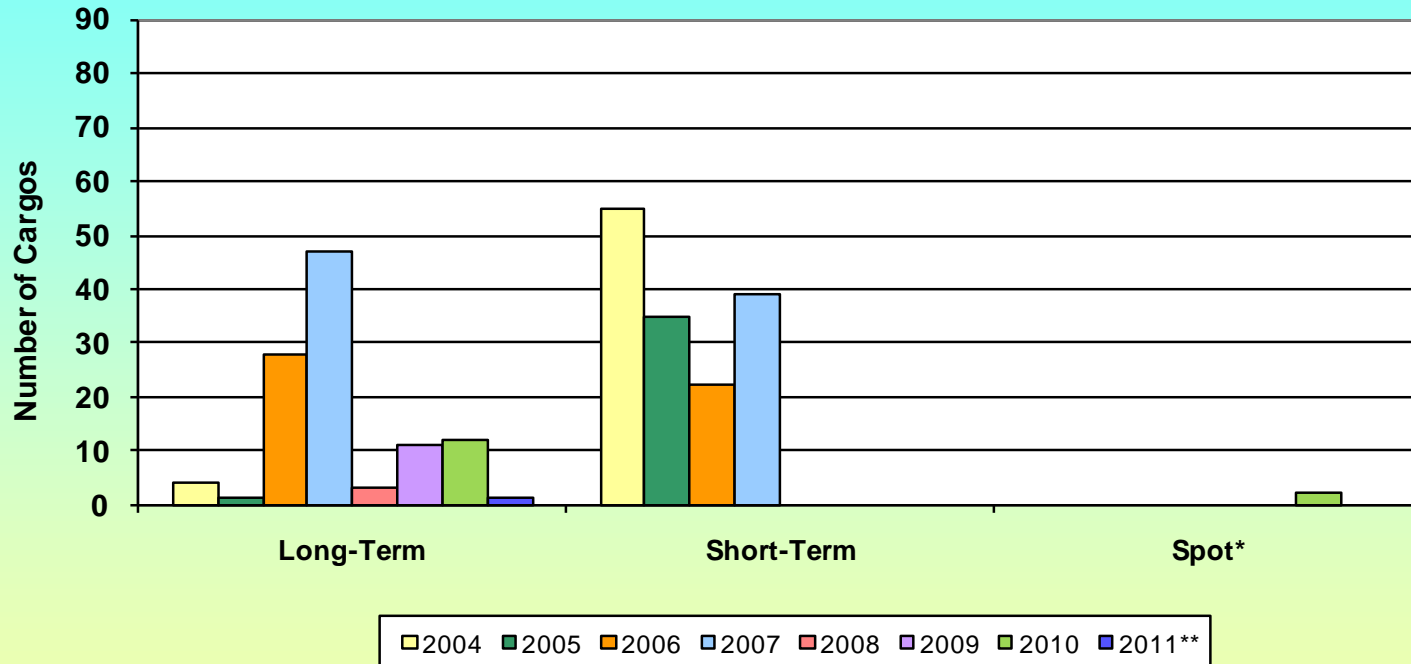
# LNG Imports by Transaction Type - Elba Island 2004-2011



\*Spot cargoes are only identified for 2006 and later years. Prior to 2006, spot cargoes could be included in either long-term or short-term types.

\*\*2011 data is through May.

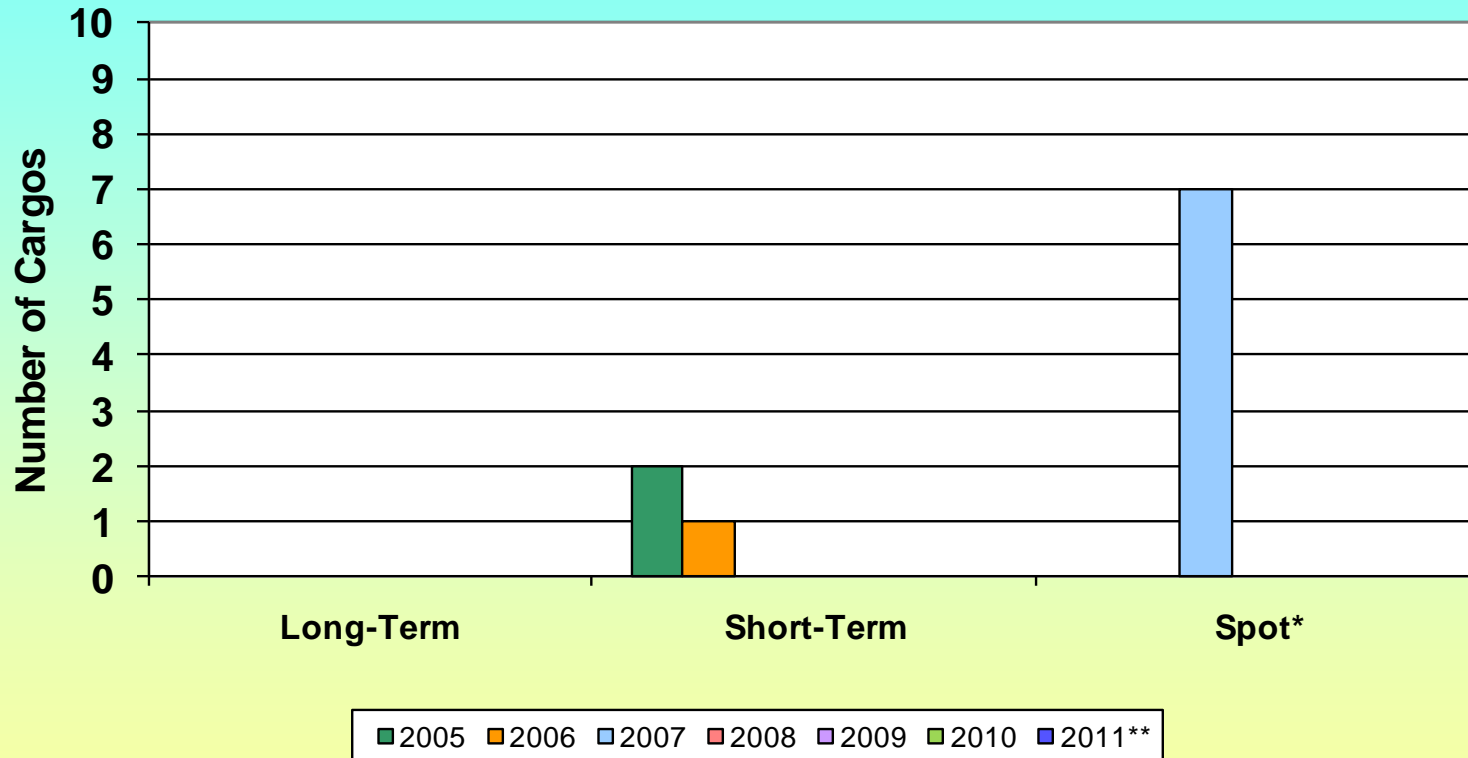
# LNG Imports by Transaction Type - Lake Charles 2004-2011



\*Spot cargoes are only identified for 2006 and later years. Prior to 2006, spot cargoes could be included in either long-term or short-term types.

\*\*2011 data is through May.

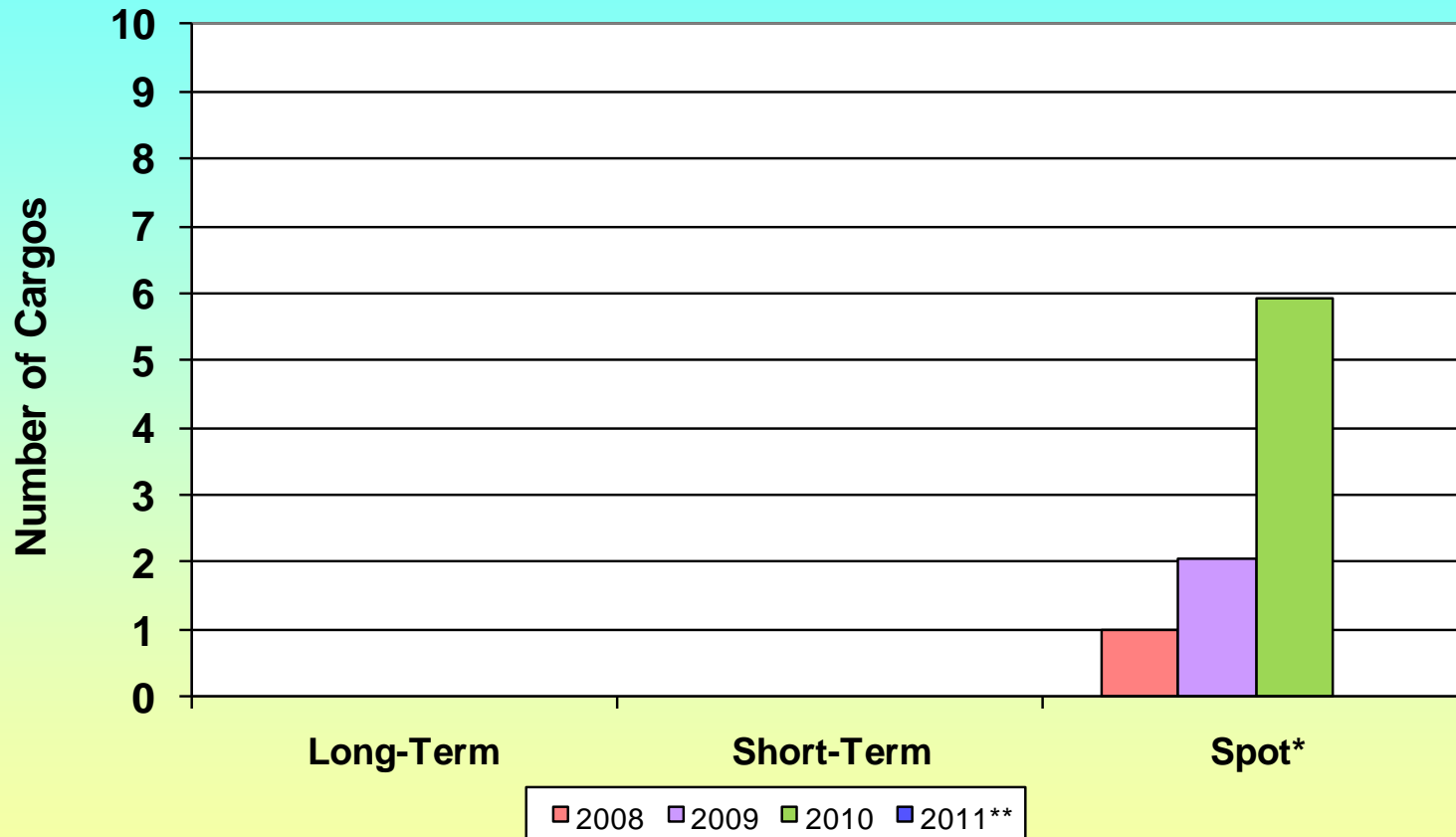
# LNG Imports by Transaction Type - Gulf Gateway 2005-2011



\*Spot cargoes are only identified for 2006 and later years. Prior to 2006, spot cargoes could be included in either long-term or short-term types.

\*\*2011 data is through May. \*Excelerate Energy has announced that it will retire the Gulf Gateway terminal in the near future.

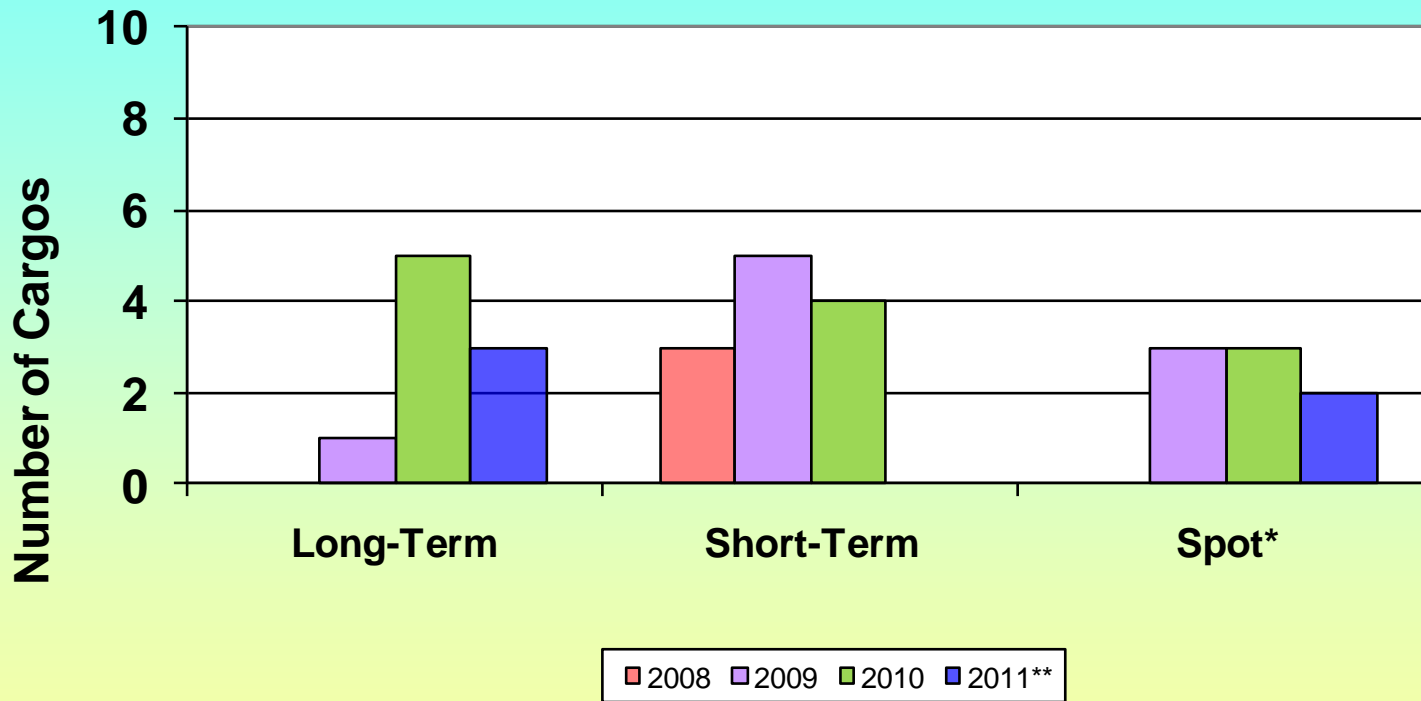
# LNG Imports by Transaction Type - Northeast Gateway 2008-2011



\*Spot cargos are only identified for 2006 and later years. Prior to 2006, spot cargos could be included in either long-term or short-term types.

\*\*2011 data is through May.

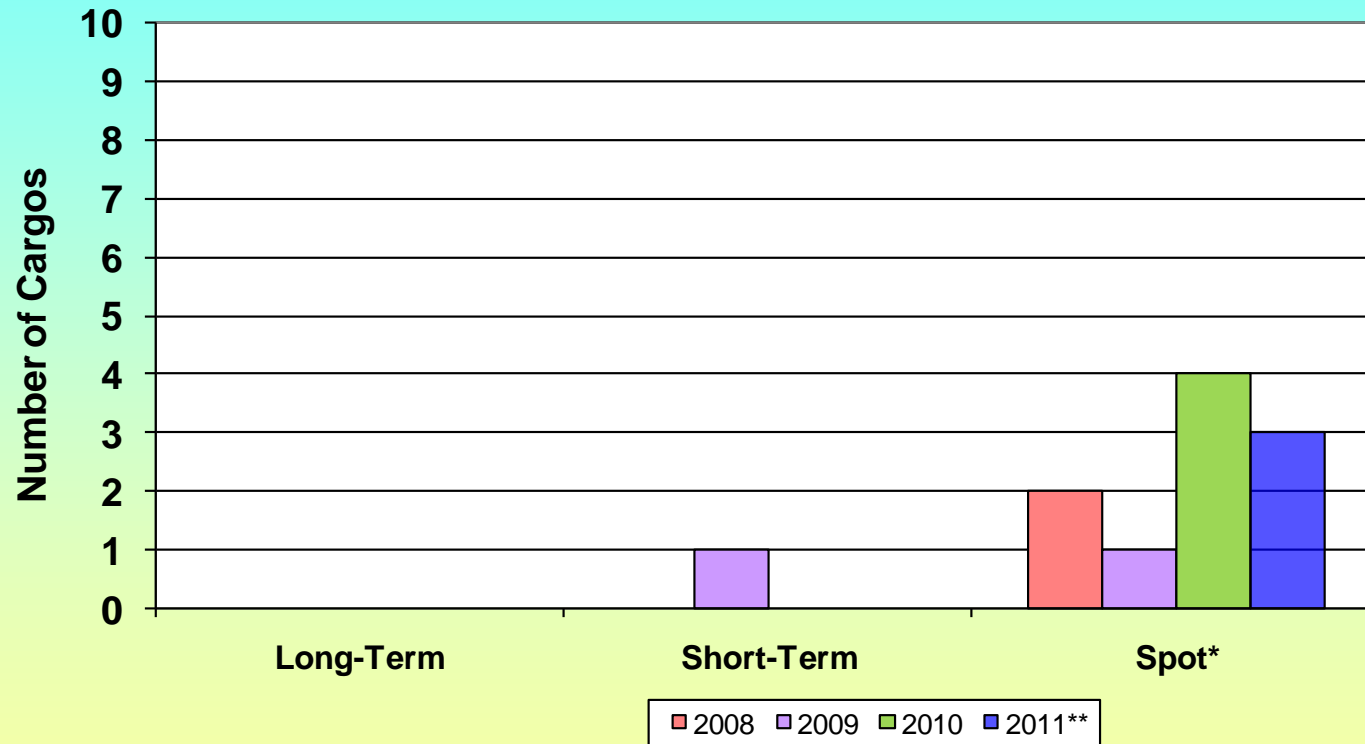
# LNG Imports by Transaction Type - Sabine Pass 2008-2011



\*Spot cargos are only identified for 2006 and later years. Prior to 2006, spot cargos could be included in either long-term or short-term types.

\*\*2011 data is through May.

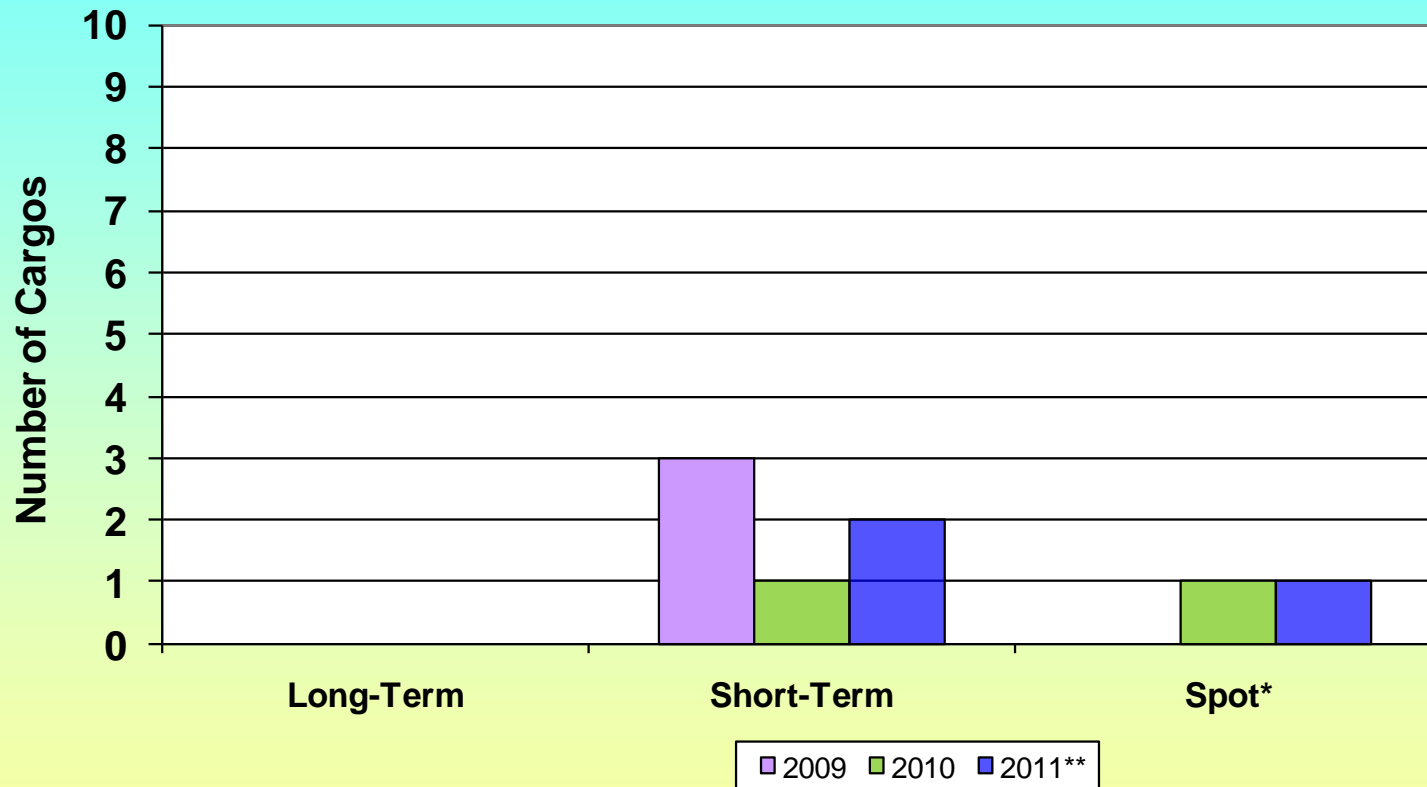
# LNG Imports by Transaction Type - Freeport 2008-2011



\*Spot cargoes are only identified for 2006 and later years. Prior to 2006, spot cargoes could be included in either long-term or short-term types.

\*\*2011 data is through May.

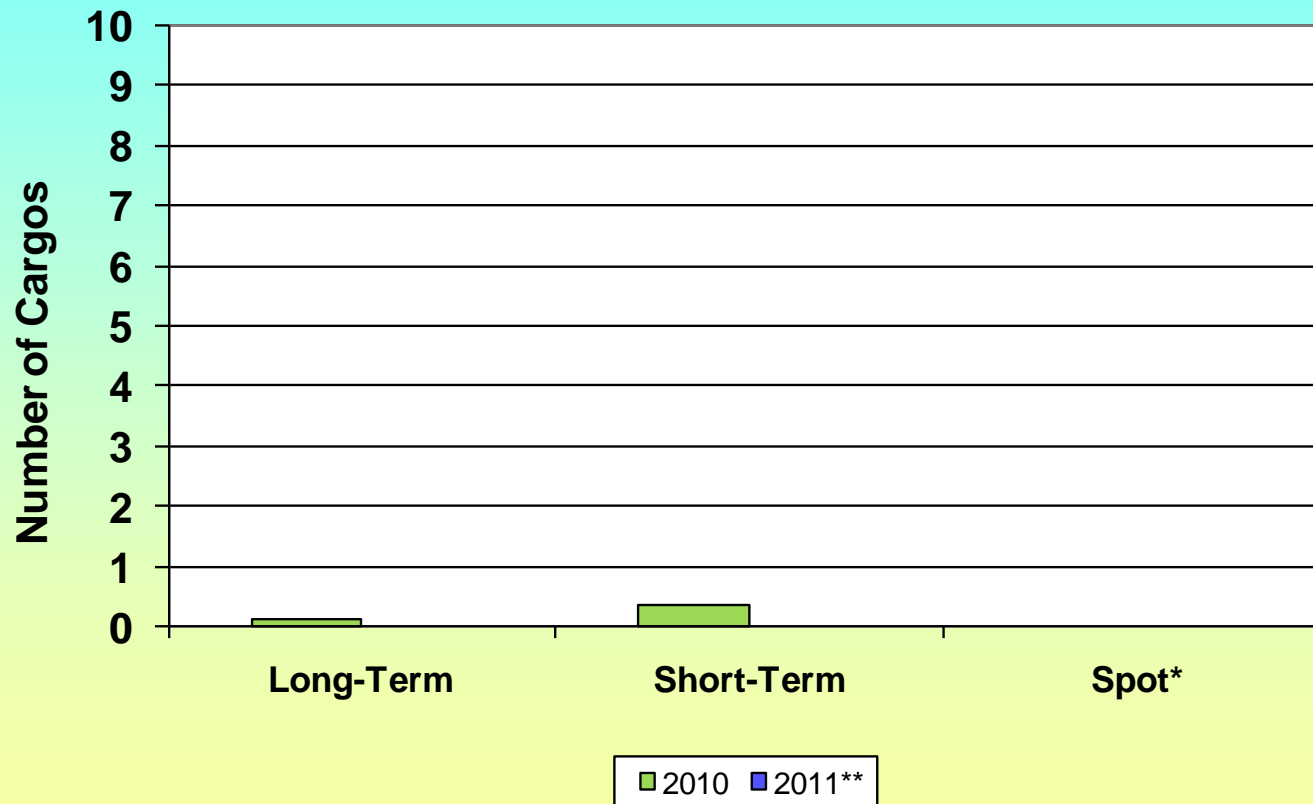
# LNG Imports by Transaction Type - Cameron 2009-2011



\*Spot cargoes are only identified for 2006 and later years. Prior to 2006, spot cargoes could be included in either long-term or short-term types.

\*\*2011 data is through May.

# LNG Imports by Transaction Type - Neptune DWP 2009-2011

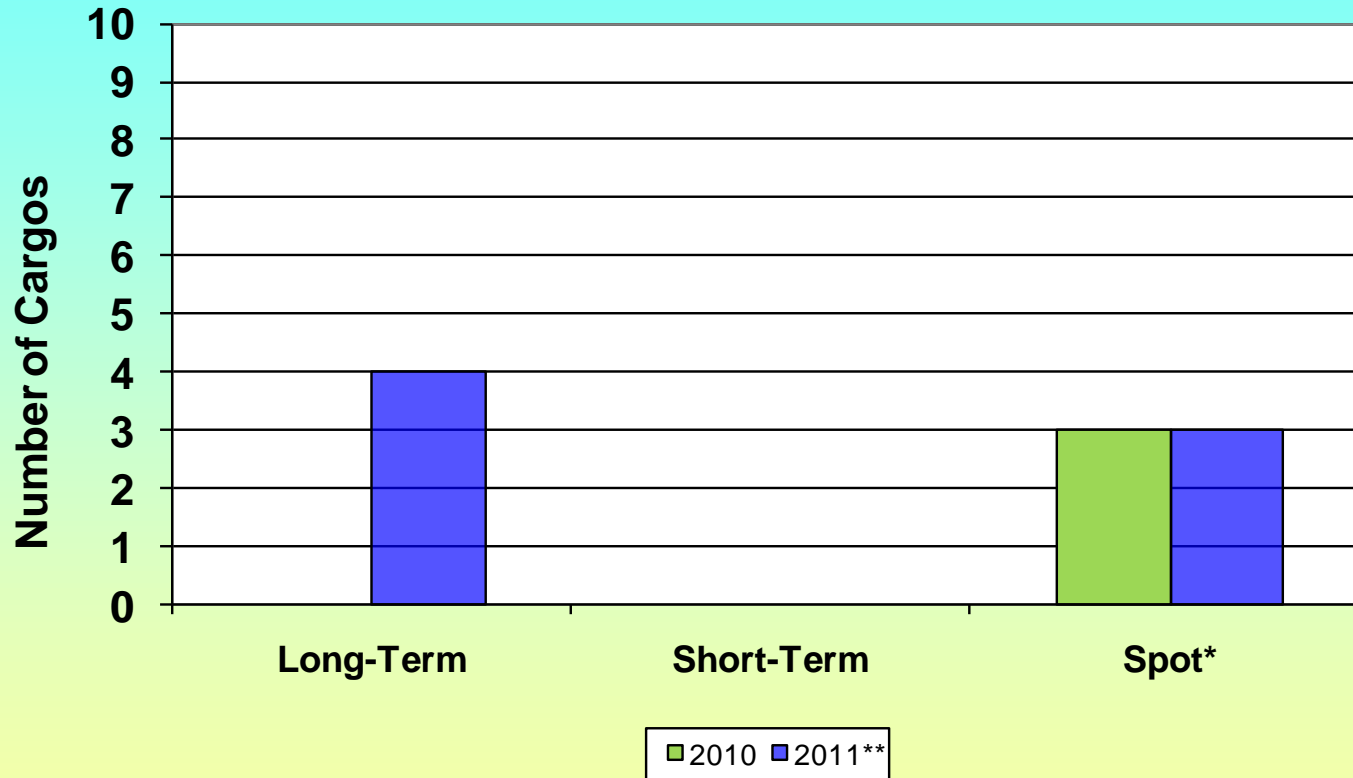


\*Spot cargoes are only identified for 2006 and later years. Prior to 2006, spot cargoes could be included in either long-term or short-term types.

\*\*2011 data is through May.



# LNG Imports by Transaction Type - Golden Pass 2010-2011



\*Spot cargoes are only identified for 2006 and later years. Prior to 2006, spot cargoes could be included in either long-term or short-term types.

\*\*2011 data is through May.

# Annual LNG Imports by Transaction Type (Billion cubic feet)

(1 of 3)



Terminal	Transaction Type*	2004	2005	2006	2007	2008	2009	2010	2011**
Cove Point MD	Long-Term	-	-	-	-	-	-	-	-
	Short-Term	209.3	221.7	84.6	98.1	25.9	64.0	37.4	8.7
	Spot	N/A	N/A	32.0	50.1	-	8.3	6.0	-
Elba Island GA	Long-Term	105.2	107.1	104.4	145.4	117.8	142.2	106.5	28.6
	Short-Term	-	24.9	39.8	24.8	17.9	-	-	-
	Spot	N/A	N/A	2.6	-	-	-	-	5.7
Everett MA	Long-Term	84.8	81.9	89.7	82.2	78.3	88.6	101.6	44.8
	Short-Term	89.0	86.6	86.4	101.5	87.0	50.7	36.0	17.0
	Spot	N/A	N/A	-	-	-	16.6	11.4	-
Lake Charles LA	Long-Term	12.0	2.6	81.1	139.6	8.9	31.3	33.2	2.3
	Short-Term	151.8	101.2	62.5	111.9	-	-	-	-
	Spot	N/A	N/A	-	-	-	-	5.8	-

\*Spot cargos are only identified for 2006 and later years. Prior to 2006, spot cargos could be included in either long-term or short-term types.

\*\*2011 data is through May.

# Annual LNG Imports by Transaction Type (Billion cubic feet) (2 of 3)



Terminal	Transaction Type*	2004	2005	2006	2007	2008	2009	2010	2011**
Gulf Gateway	Long-Term	N/A	–	–	–	–	–	–	–
	Short-Term	N/A	5.2	0.5	–	–	–	–	–
	Spot	N/A	N/A	–	17.3	–	–	–	–
Northeast Gateway	Long-Term	N/A	N/A	N/A	N/A	–	–	–	–
	Short-Term	N/A	N/A	N/A	N/A	–	–	–	–
	Spot	N/A	N/A	N/A	N/A	0.9	5.7	14.7	–
Sabine Pass LA	Long-Term	N/A	N/A	N/A	N/A	–	4.2	20.0	12.1
	Short-Term	N/A	N/A	N/A	N/A	9.2	16.4	14.0	–
	Spot	N/A	N/A	N/A	N/A	–	8.5	10.9	8.9
Freeport TX	Long-Term	N/A	N/A	N/A	N/A	–	–	–	–
	Short-Term	N/A	N/A	N/A	N/A	–	2.8	–	–
	Spot	N/A	N/A	N/A	N/A	5.7	3.0	12.2	9.8

\*Spot cargos are only identified for 2006 and later years. Prior to 2006, spot cargos could be included in either long-term or short-term types.

\*\*2011 data is through May.

# Annual LNG Imports by Transaction Type (Billion cubic feet) (3 of 3)



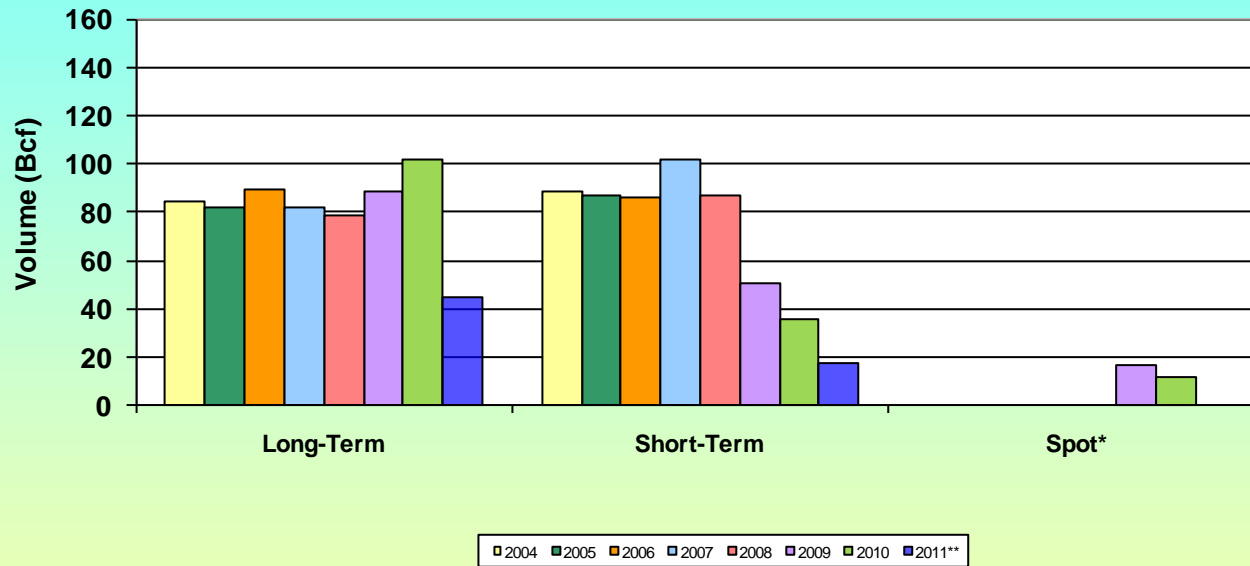
Terminal	Transaction Type*	2004	2005	2006	2007	2008	2009	2010	2011**
Cameron LA	Long-Term	N/A	N/A	N/A	N/A	N/A	–	–	–
	Short-Term	N/A	N/A	N/A	N/A	N/A	9.7	4.2	6.8
	Spot	N/A	N/A	N/A	N/A	N/A	–	2.8	3.0
Neptune DWP	Long-Term	N/A	N/A	N/A	N/A	N/A	N/A	0.3	–
	Short-Term	N/A	N/A	N/A	N/A	N/A	N/A	1.0	–
	Spot	N/A	N/A	N/A	N/A	N/A	N/A	–	–
Golden Pass TX	Long-Term	N/A	N/A	N/A	N/A	N/A	N/A	–	18.5
	Short-Term	N/A	N/A	N/A	N/A	N/A	N/A	–	–
	Spot	N/A	N/A	N/A	N/A	N/A	N/A	13.0	12.9

\*Spot cargos are only identified for 2006 and later years. Prior to 2006, spot cargos could be included in either long-term or short-term types.

\*\*2011 data is through May.



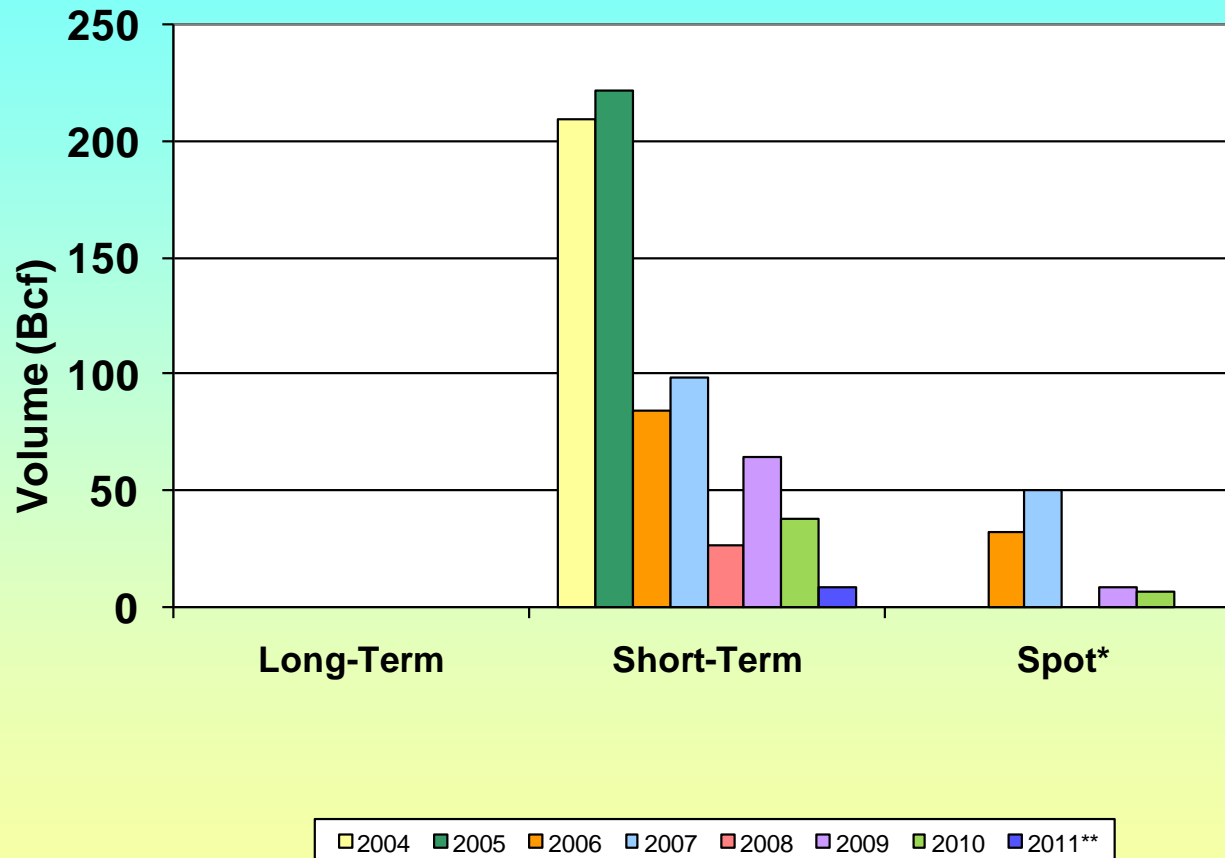
# LNG Imports by Transaction Type - Everett 2004-2011



\*Spot cargos are only identified for 2006 and later years. Prior to 2006, spot cargos could be included in either long-term or short-term types.

\*\*2011 data is through May.

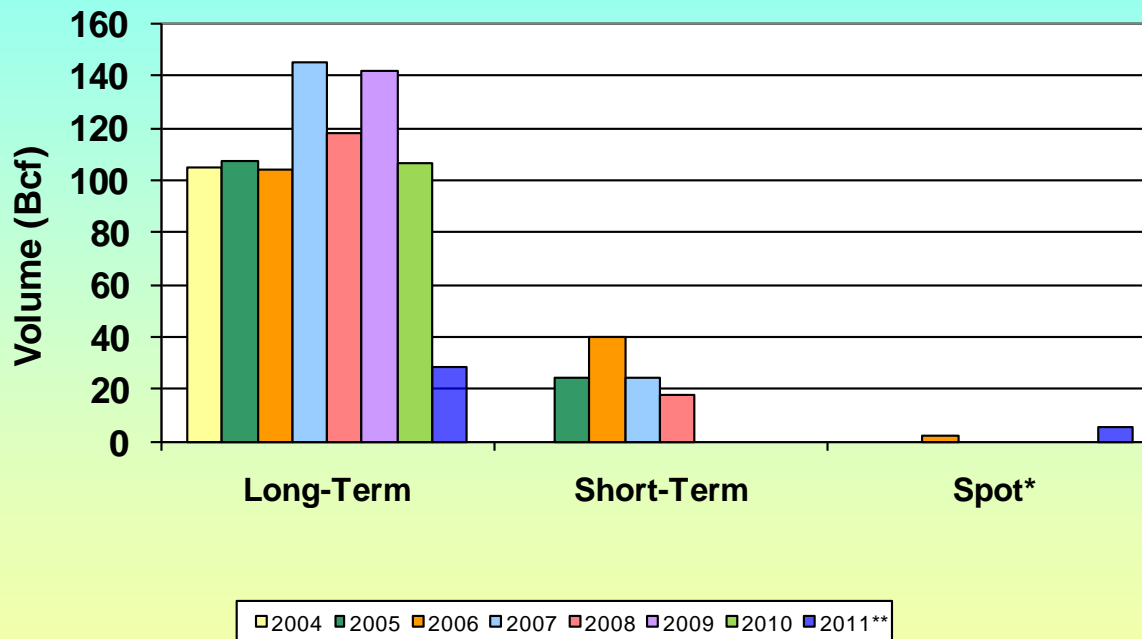
# LNG Imports by Transaction Type - Cove Point 2004-2011



\*Spot cargos are only identified for 2006 and later years. Prior to 2006, spot cargos could be included in either long-term or short-term types.

\*\*2011 data is through May.

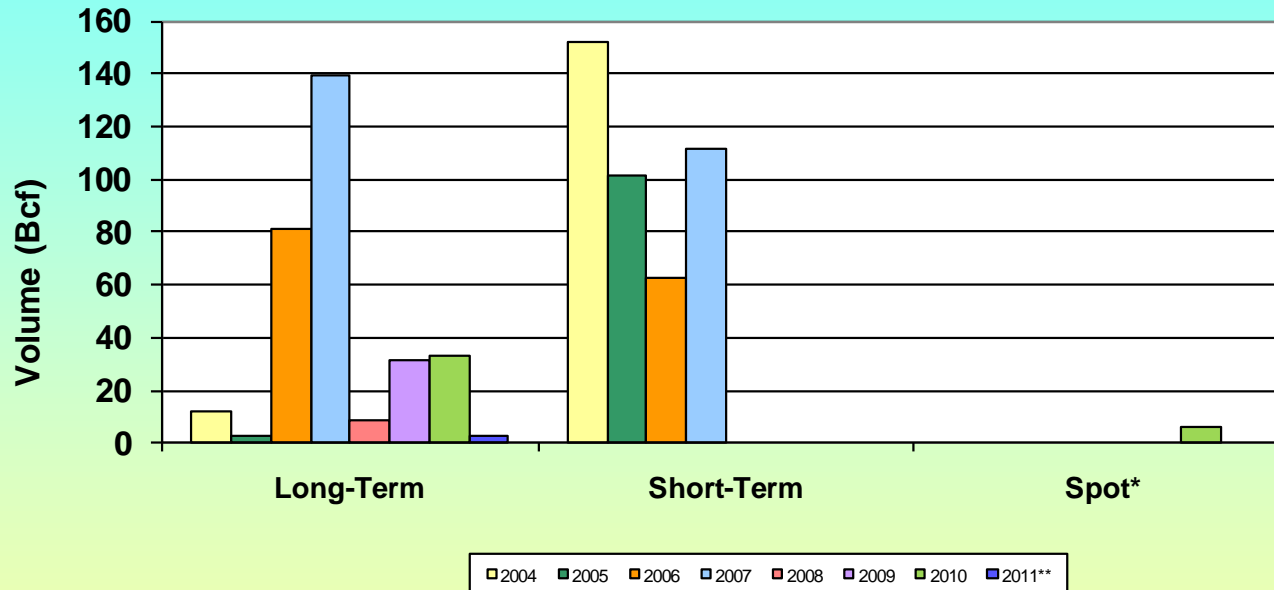
# LNG Imports by Transaction Type - Elba Island 2004-2011



\*Spot cargos are only identified for 2006 and later years. Prior to 2006, spot cargos could be included in either long-term or short-term types.

\*\*2011 data is through May.

# LNG Imports by Transaction Type - Lake Charles 2004-2011

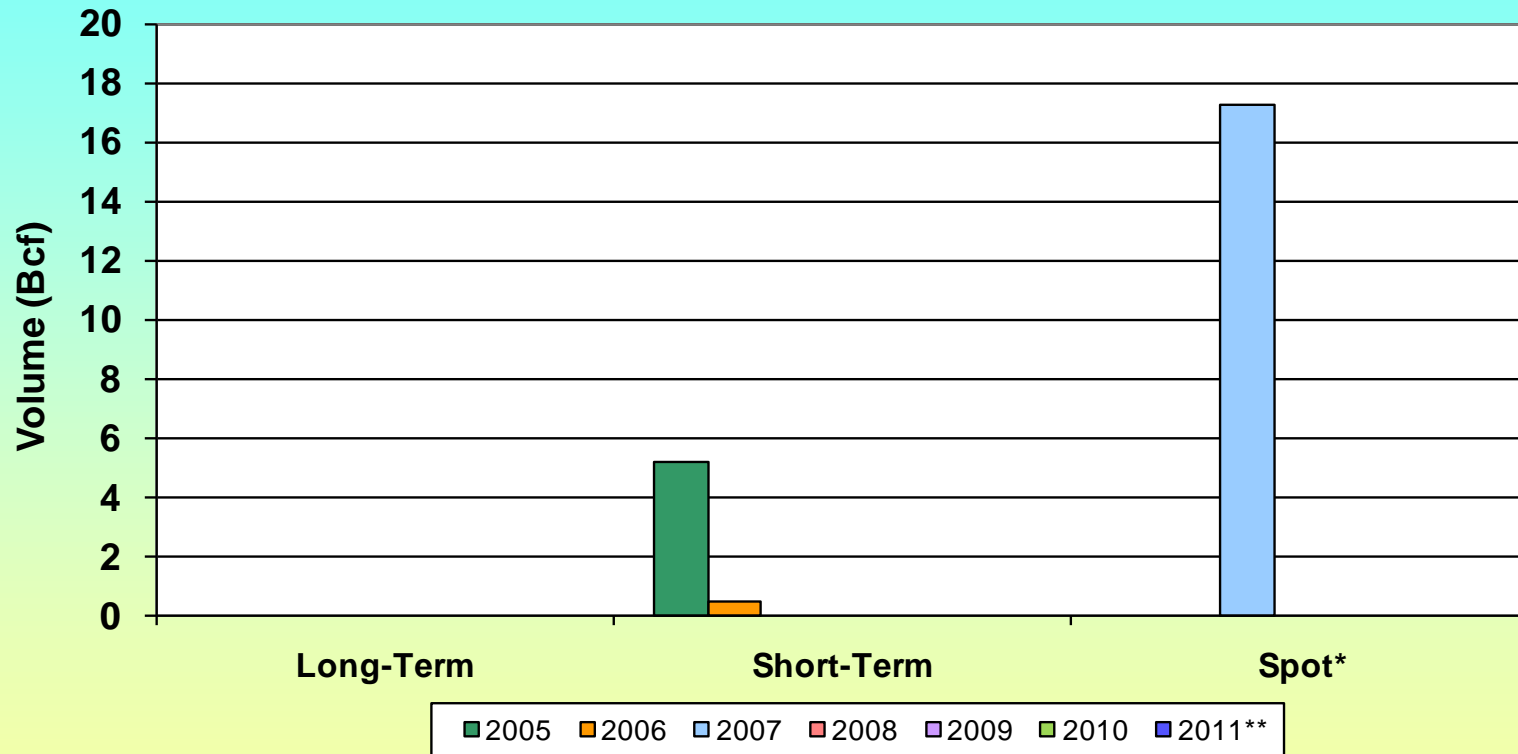


\*Spot cargos are only identified for 2006 and later years. Prior to 2006, spot cargos could be included in either long-term or short-term types.

\*\*2011 data is through May.



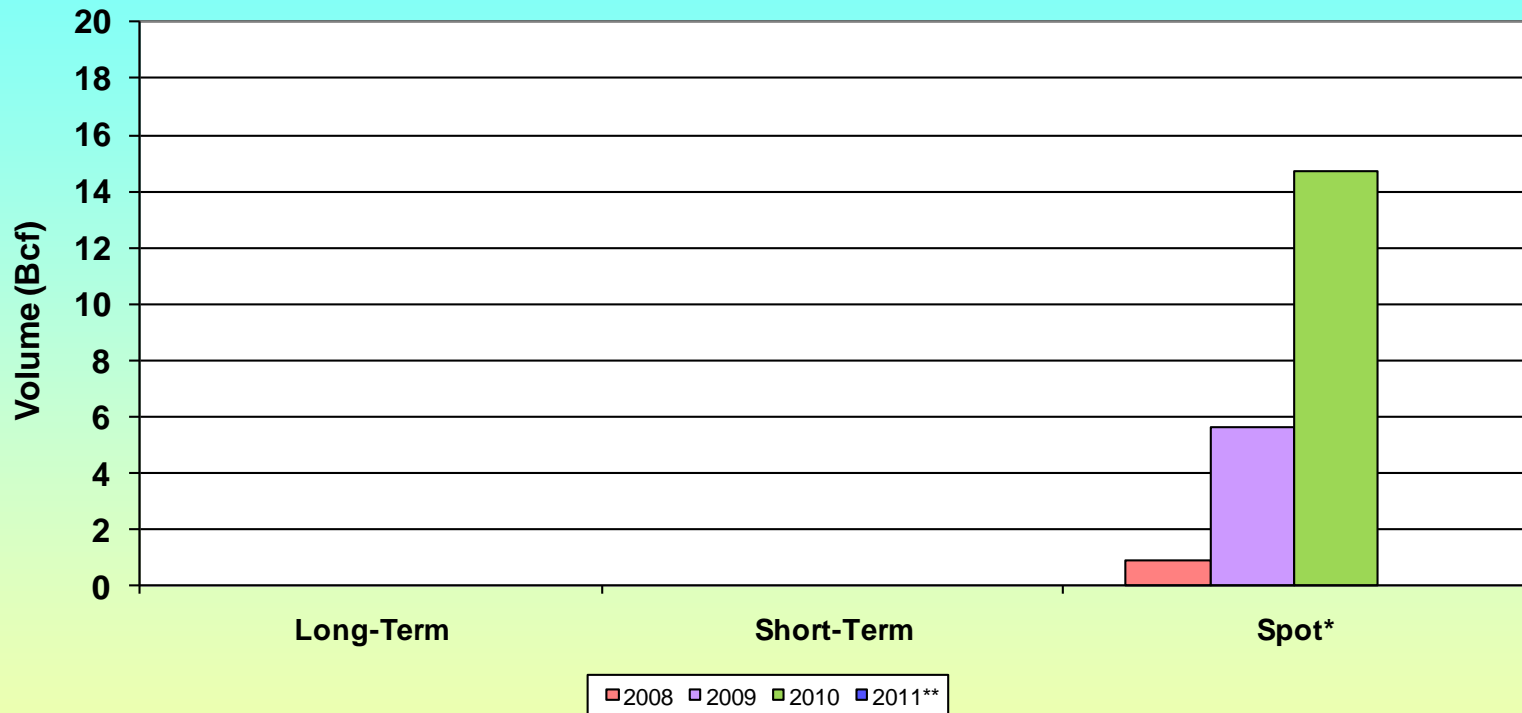
# LNG Imports by Transaction Type - Gulf Gateway 2005-2011



\*Spot cargos are only identified for 2006 and later years. Prior to 2006, spot cargos could be included in either long-term or short-term types.

\*\*2011 data is through May. Excelerate Energy has announced that it will retire the Gulf Gateway terminal in the near future.

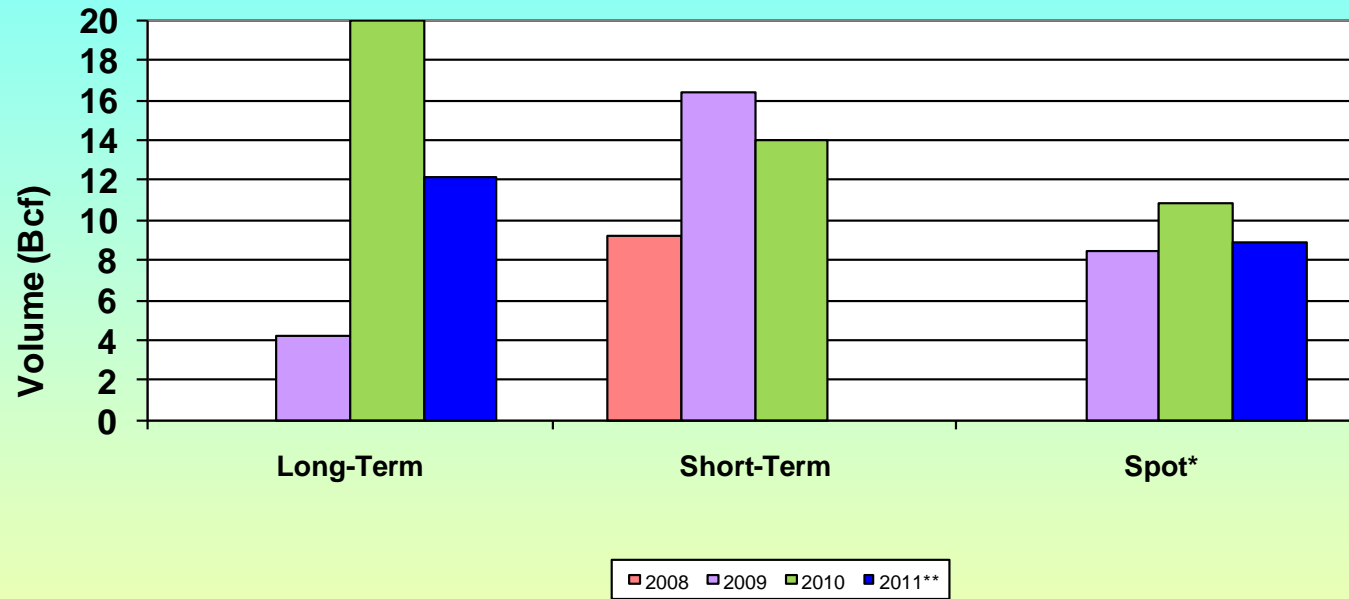
# LNG Imports by Transaction Type - Northeast Gateway 2008-2011



\*Spot cargos are only identified for 2006 and later years. Prior to 2006, spot cargos could be included in either long-term or short-term types.

\*\*2011 data is through May.

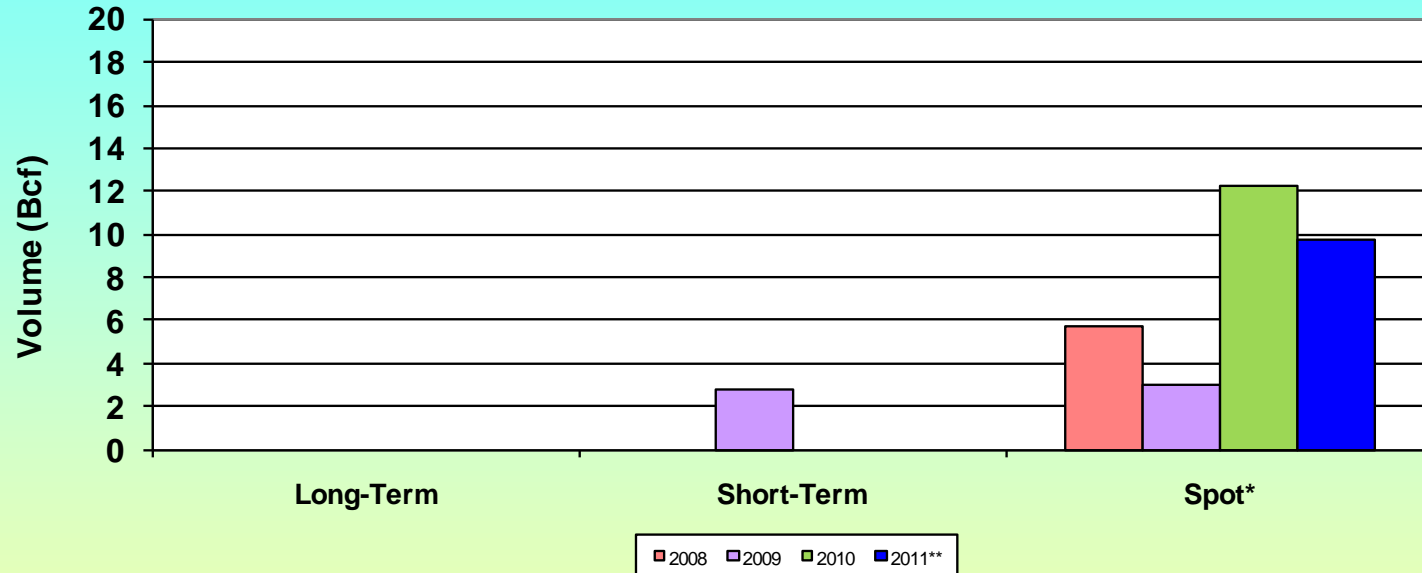
# LNG Imports by Transaction Type - Sabine Pass 2008-2011



\*Spot cargos are only identified for 2006 and later years. Prior to 2006, spot cargos could be included in either long-term or short-term types.

\*\*2011 data is through May.

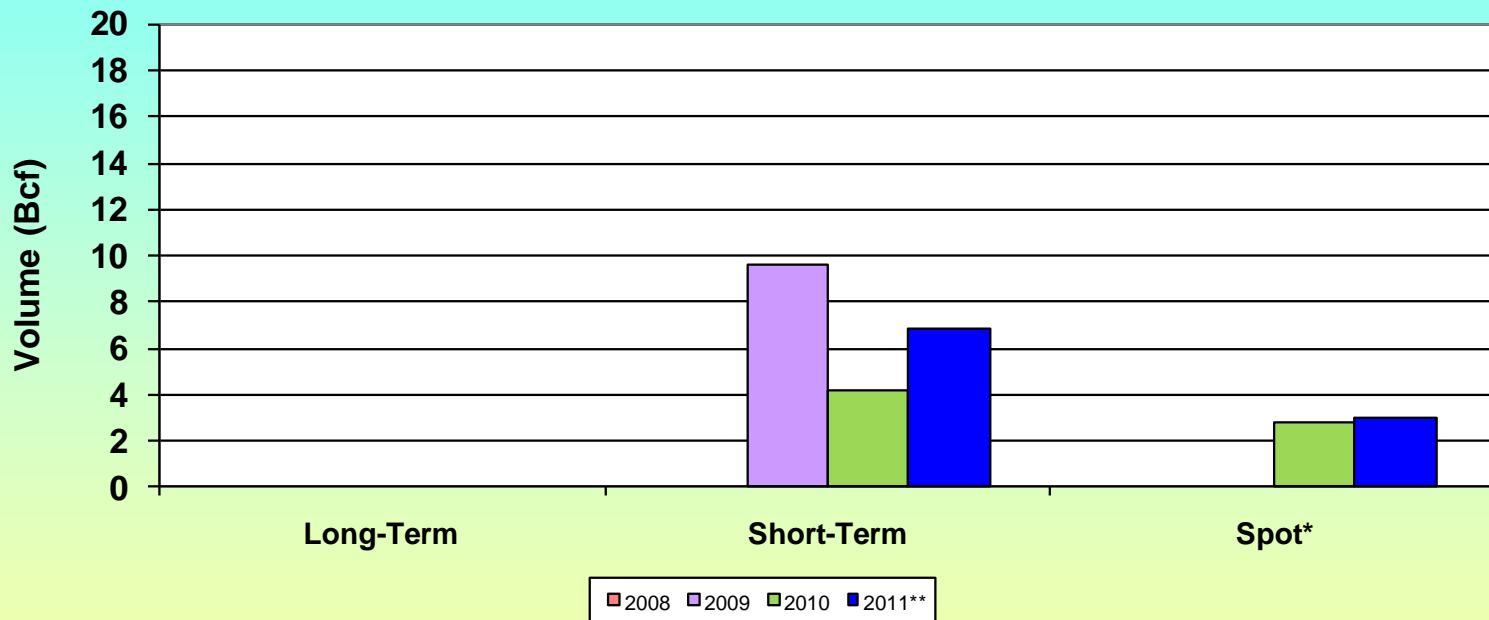
# LNG Imports by Transaction Type - Freeport 2008-2011



\*Spot cargos are only identified for 2006 and later years. Prior to 2006, spot cargos could be included in either long-term or short-term types.

\*\*2011 data is through May.

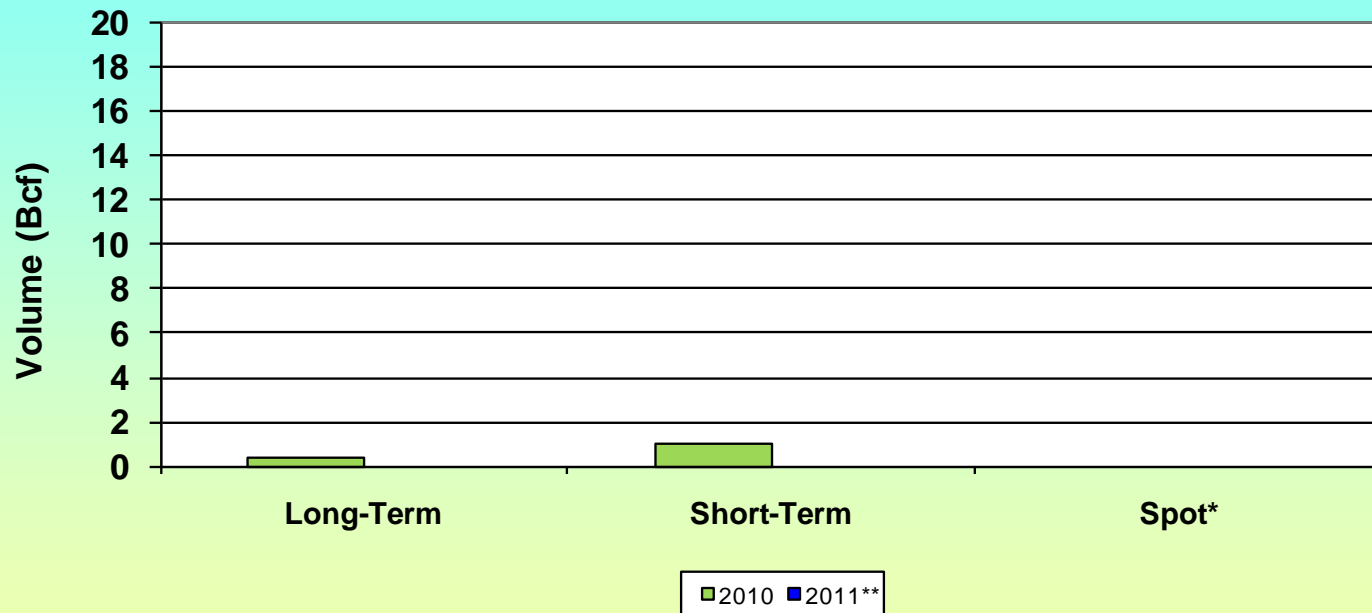
# LNG Imports by Transaction Type - Cameron 2009-2011



\*Spot cargos are only identified for 2006 and later years. Prior to 2006, spot cargos could be included in either long-term or short-term types.

\*\*2011 data is through May.

# LNG Imports by Transaction Type - Neptune DWP 2010-2011

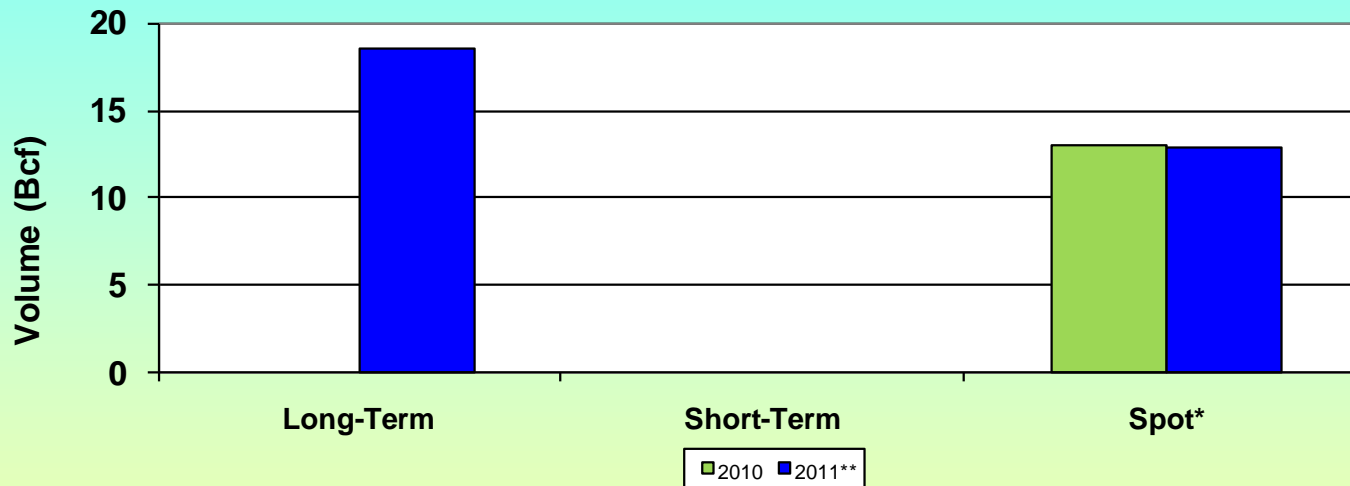


\*Spot cargos are only identified for 2006 and later years. Prior to 2006, spot cargos could be included in either long-term or short-term types.

\*\*2011 data is through May.



# LNG Imports by Transaction Type - Golden Pass 2010-2011



\*Spot cargos are only identified for 2006 and later years. Prior to 2006, spot cargos could be included in either long-term or short-term types.

\*\*2011 data is through May.

# LNG Imports by Country of Origin (Number of Cargos)

(1 of 6)



Terminal	Year	Algeria	Australia	Egypt	Eq. Guin.	Malaysia	Nigeria	Norway	Oman	Qatar	Trin. & Tob.	Yemen	Peru	Misc.	Ann. Tot.
Everett* MA	2004										67				67
	2005										63				63
	2006										65				65
	2007										66				66
	2008										64				64
	2009			4							57				61
	2010			2							52.6	9.9			64.5
	2011										19	6			25
Cove Point MD	2004	13					1				63				77
	2005	12		8							58				78
	2006	6		5							29				40
	2007	8		9			2				32				51
	2008			1				5			3				9
	2009			2			1	10			12				25
	2010			2				9			4				15
	2011							3							3

\*Partially discharged cargos shown as fractional cargos in table.

# LNG Imports by Country of Origin (Number of Cargos)

(2 of 6)



Terminal	Year	Algeria	Australia	Egypt	Eq. Guin.	Malaysia	Nigeria	Norway	Oman	Qatar	Trin. & Tob.	Yemen	Peru	Misc.	Ann. Tot.
Elba Island GA	2004										41				41
	2005			9			1				40				50
	2006			15							40				55
	2007			13	4						47				64
	2008			15			1				33				49
	2009			39							11				50
	2010			18							19				37
	2011			7						1	3				11
Lake Charles LA	2004	32	5			7	3		3	4	4			1	59
	2005	21		9		2	1		1	1	1				36
	2006			22			19				9				50
	2007	18		17	2		28			4	17				86
	2008			2			1								3
	2009			7			3				1				11
	2010			1			13								14
	2011										1				1

# LNG Imports by Country of Origin (Number of Cargos)

(3 of 6)



Terminal	Year	Algeria	Australia	Egypt	Eq. Guin.	Malaysia	Nigeria	Norway	Oman	Qatar	Trin. & Tob.	Yemen	Peru	Misc.	Ann. Tot.
Gulf Gateway LA	2004														
	2005					1	1								2
	2006										1				1
	2007						2			2	3				7
	2008														—
	2009														—
	2010														—
	2011														—
Northeast Gateway* MA	2004														
	2005														
	2006														
	2007														
	2008										1				1
	2009			2.1											2.1
	2010			1.9						2	2				5.9
	2011														—

\*Partially discharged cargos shown as fractional cargos in table.

# LNG Imports by Country of Origin (Number of Cargos)

(4 of 6)



Terminal	Year	Algeria	Australia	Egypt	Eq. Guin.	Malaysia	Nigeria	Norway	Oman	Qatar	Trin. & Tob.	Yemen	Peru	Misc.	Ann. Tot.
Sabine Pass LA	2004														
	2005														
	2006														
	2007														
	2008						2			1					3
	2009			1			1			2	5				9
	2010									5		4	3		12
	2011									4		1			5
Freeport TX	2004														
	2005														
	2006														
	2007														
	2008										2				2
	2009			1							1				2
	2010						2						2		4
	2011												3		3

# LNG Imports by Country of Origin (Number of Cargos)

(5 of 6)



Terminal	Year	Algeria	Australia	Egypt	Eq. Guin.	Malaysia	Nigeria	Norway	Oman	Qatar	Trin. & Tob.	Yemen	Peru	Misc.	Ann. Tot.
Cameron LA	2004														
	2005														
	2006														
	2007														
	2008														
	2009									1	2				3
	2010									1	1				2
	2011			1									2		3
Neptune DWP*	2004														
	2005														
	2006														
	2007														
	2008														
	2009														
	2010										0.4	0.1			0.5
	2011														—

\*Partially discharged cargos shown as fractional cargos in table.

# LNG Imports by Country of Origin (Number of Cargos)

(6 of 6)



Terminal	Year	Algeria	Australia	Egypt	Eq. Guin.	Malaysia	Nigeria	Norway	Oman	Qatar	Trin. & Tob.	Yemen	Peru	Misc.	Ann. Tot.
Golden Pass TX	2004														
	2005														
	2006														
	2007														
	2008														
	2009														
	2010									3					3
	2011									7					7

\*Partially discharged cargos shown as fractional cargos in table.

# Average\* LNG Import Landed Prices by Transaction Type

## All CONUS Terminals (US\$ per MMBtu)

Type	Year	Jan	Feb	Mar	Apr	May	Jun	Jul	Aug	Sep	Oct	Nov	Dec	Totals
Long-Term	2004	5.55	6.10	4.52	5.13	5.19	6.10	5.52	5.78	4.69	5.51	6.32	6.74	5.64
	2005	6.26	5.95	5.74	6.23	6.00	6.00	6.18	5.90	8.84	11.78	12.01	9.58	7.26
	2006	11.32	8.31	7.41	6.61	6.56	5.51	5.65	6.21	6.25	4.59	6.54	7.13	6.62
	2007	5.69	6.72	7.04	6.59	7.03	6.86	6.22	5.60	4.98	5.71	6.55	6.23	6.30
	2008	7.74	8.01	8.14	8.57	9.95	11.34	11.92	9.48	7.72	7.21	6.06	6.55	8.65
	2009	6.52	5.13	4.10	3.52	3.30	3.52	3.64	3.18	2.93	3.49	4.08	4.36	3.89
	2010	5.43	5.26	4.52	4.08	3.84	3.79	4.37	4.79	3.57	3.54	3.29	4.02	4.17
	2011	4.58	4.54	4.27	4.10	4.04								4.27
Short-Term	2004	5.31	5.14	4.95	4.87	5.22	5.32	5.21	5.15	4.74	4.92	6.54	6.29	5.29
	2005	5.61	5.88	5.78	6.46	6.24	5.94	6.53	7.31	9.04	10.54	11.82	9.43	7.70
	2006	8.93	7.67	7.20	6.99	6.95	5.90	6.03	7.10	6.49	6.81	7.45	7.71	7.08
	2007	6.78	7.80	7.13	6.90	7.02	6.74	7.02	6.20	6.34	7.11	8.04	7.97	7.02
	2008	8.29	9.61	9.66	9.71	11.27	11.83	12.53	10.13	12.43	13.28	13.10	12.13	10.69
	2009	10.32	7.89	8.16	5.23	4.36	3.80	4.82	4.28	3.44	3.82	3.80	3.84	5.36
	2010	5.17	4.76	4.75	4.00	5.12	5.19		4.86	5.14	4.21	4.92	5.70	4.83
	2011	4.38	4.47	5.80	6.20									4.91
Spot**	2006	7.99	7.80		6.85	5.63	5.69	5.65		6.76			8.37	6.95
	2007	5.80		7.70	7.25	7.25	8.16	6.60	6.26					6.92
	2008				12.54	12.86								12.75
	2009	8.35		8.35	4.98	8.35	4.15	3.79	4.46	4.19	6.31	3.58	5.16	5.17
	2010	5.38	5.84	4.95	4.09	4.47		5.31		6.35	6.70	6.87	7.33	5.71
	2011	6.09	6.65	5.99	6.65	4.50								5.82

\*Mean transaction price; not volume-weighted

\*\*Spot cargos are only identified for 2006 and later years. Prior to 2006, spot cargos could be included in either long-term or short-term types.

Rev. 7-5-11

# Average\* LNG Import Landed Prices (US\$ per MMBtu)

(1 of 6)



Terminal	Year	Jan	Feb	Mar	Apr	May	Jun	Jul	Aug	Sep	Oct	Nov	Dec	Annual Average
Everett MA	2004	4.67	5.11	4.33	4.54	4.76	4.90	5.09	5.15	4.44	4.72	5.42	5.44	4.91
	2005	5.60	5.68	5.43	5.45	5.60	5.68	5.80	5.30	6.67	8.29	8.68	7.56	6.25
	2006	8.75	8.12	7.64	6.93	7.29	5.81	6.23	6.63	6.05	6.83	7.40	7.43	7.19
	2007	7.10	7.53	7.27	6.47	7.18	6.62	6.89	6.11	6.01	7.01	7.70	7.59	6.91
	2008	8.64	9.32	9.09	9.15	9.29	11.34	11.49	10.93	9.37	10.25	8.84	10.44	9.79
	2009	8.49	7.95	8.02	5.44	4.94	3.94	4.47	4.39	3.86	4.11	3.96	4.31	5.51
	2010	5.10	5.63	4.35	4.83	4.24	4.32	4.41	4.78	4.37	3.93	3.79	4.21	4.50
	2011	4.71	4.67	4.23	4.63	3.83								4.44
Cove Point MD	2004	6.07	5.61	4.98	5.21	5.56	6.20	5.85	5.69	5.00	5.20	7.23	7.21	5.85
	2005	6.21	5.98	6.06	6.86	6.51	6.07	6.70	7.22	9.90	12.62	12.68	10.88	8.15
	2006	10.51	7.91	6.81	6.79	6.65	6.06	5.81	6.87	6.62	3.94	8.15	7.74	7.10
	2007	5.41	8.24	7.40	7.54	7.57		6.84	6.04	5.53	6.54	7.27		6.87
	2008	7.20	8.00	9.18		11.28			8.80				6.89	8.50
	2009	6.14	4.48	4.06	3.59	3.28	3.48	3.90		2.67	3.54	4.23	4.36	3.80
	2010	5.93	5.27	4.79	3.84						3.84			5.01
	2011	4.22	4.32											4.28

\*Mean transaction price; not volume-weighted

# Average\* LNG Import Landed Prices (US\$ per MMBtu)

(2 of 6)



Terminal	Year	Jan	Feb	Mar	Apr	May	Jun	Jul	Aug	Sep	Oct	Nov	Dec	Annual Average
Elba Island GA	2004	6.11	5.73	5.11	5.35	5.88	6.91	6.11	6.01	5.06	5.75	7.58	7.73	6.16
	2005	5.95	6.07	5.99	7.40	6.85	6.42	7.08	8.28	10.59	12.85	12.60	10.86	8.75
	2006	11.11	7.83	6.78	6.84	6.63	5.61	5.57	6.71	6.55	4.27	6.79	7.67	6.73
	2007	5.52	6.80	7.19	7.18	7.12	7.24	6.35	5.73	5.08	6.08	6.95	6.89	6.46
	2008	6.86	7.68	8.61	9.31	11.01	11.65	12.84	9.04	8.13	7.21	6.21	6.62	9.24
	2009	5.87	4.21	3.37	3.37	3.40	3.28	3.69	3.12	2.58	3.47	4.03	4.22	3.58
	2010	5.55	5.01	4.55	3.58	4.01	3.89	4.46	4.51	3.39	3.58	3.03	4.01	4.19
	2011	3.95	4.05	3.53	3.98	4.40								4.01
Lake Charles LA	2004	4.97	5.55	5.40	4.71	5.11	5.31	4.91	4.69	4.45	4.86		6.43	5.10
	2005	5.78	6.15		6.56	6.12	5.71	6.29	7.06	9.39	12.33	13.11	11.37	8.39
	2006	10.76	7.80		6.65	6.50	5.40	5.63	6.19	6.25	3.69	6.58	6.99	6.21
	2007	5.29	6.35	6.79	6.50	6.64	6.76	6.21	5.39	4.96	5.99			6.38
	2008									7.82		5.93		7.19
	2009			3.16	3.10	2.86	3.04	3.31	2.91	3.12	3.26	3.80		3.14
	2010			4.32	3.51	3.85	3.48	3.95			3.21			3.67
	2011				3.98									3.98

\*Mean transaction price; not volume-weighted

# Average\* LNG Import Landed Prices (US\$ per MMBtu)

(3 of 6)



Terminal	Year	Jan	Feb	Mar	Apr	May	Jun	Jul	Aug	Sep	Oct	Nov	Dec	Annual Average
Gulf Gateway	2004													
	2005			6.08					10.01					8.05
	2006								6.96					6.96
	2007			8.95		7.32	8.16	6.96	8.13					7.80
	2008													
	2009													
	2010													
	2011													
Northeast Gateway	2004													
	2005													
	2006													
	2007													
	2008					11.93								11.93
	2009	8.35		8.35	8.35	8.35						3.58	4.87	6.98
	2010	4.68	5.51	5.88										5.18
	2011													

\*Mean transaction price; not volume-weighted

# Average\* LNG Import Landed Prices (US\$ per MMBtu)

(4 of 6)



Terminal	Year	Jan	Feb	Mar	Apr	May	Jun	Jul	Aug	Sep	Oct	Nov	Dec	Annual Average	
Sabine Pass LA	2004														
	2005														
	2006														
	2007														
	2008				7.60		12.04								10.56
	2009			4.25	3.19		4.16		3.95	3.76		3.78	4.13		3.90
	2010	5.39	4.77	4.23	3.87			4.14			6.25	4.50	6.08		4.87
	2011	5.11		5.69	3.67										5.05
Freeport TX	2004														
	2005														
	2006														
	2007														
	2008				12.54	13.78									13.16
	2009						4.54		4.08						4.31
	2010							5.40		6.35	7.15				6.31
	2011	6.35	6.65		7.30										6.77

\*Mean transaction price, not volume-weighted

# Average\* LNG Import Landed Prices (US\$ per MMBtu)

(5 of 6)



Terminal	Year	Jan	Feb	Mar	Apr	May	Jun	Jul	Aug	Sep	Oct	Nov	Dec	Annual Average
Cameron LA	2004													
	2005													
	2006													
	2007													
	2008													
	2009						4.72	4.77				4.01		4.50
	2010	5.31						5.22						5.27
	2011	8.73		6.95	6.95									7.54
Neptune DWP	2004													
	2005													
	2006													
	2007													
	2008													
	2009													
	2010			6.13					5.91					6.02
	2011													

\*Mean transaction price; not volume-weighted

# Average\* LNG Import Landed Prices (US\$ per MMBtu)

(6 of 6)



Terminal	Year	Jan	Feb	Mar	Apr	May	Jun	Jul	Aug	Sep	Oct	Nov	Dec	Annual Average	
Golden Pass TX	2004														
	2005														
	2006														
	2007														
	2008														
	2009														
	2010												6.87	7.33	7.02
	2011	5.13		5.99	5.99	4.23									4.86

\*Mean transaction price; not volume-weighted